



Azimuthal asymmetries in SIDIS with transversely polarized target at COMPASS

BAKUR PARSAMYAN

University of Turin and INFN section of Turin

on behalf of the COMPASS Collaboration



UNIVERSITÀ
DEGLI STUDI
DI TORINO

ALMA UNIVERSITAS
TAURINENSIS



International Workshop
The Structure of Nucleons and Nuclei
Como, Italy
June 10 - 14, 2013



Outline

- Introduction
- COMPASS experiment
- Measured asymmetries and theory expectations
 - Re-evaluation of $A_{LT}^{\cos\varphi_S}$ and $A_{LT}^{\cos(\varphi_h - \varphi_S)}$:
from the lp to γ^*p cross-section
 - Theory expectations
- Summary



Outline

- **Introduction**
- COMPASS experiment
- Measured asymmetries and theory expectations
 - Re-evaluation of $A_{LT}^{\cos\varphi_S}$ and $A_{LT}^{\cos(\varphi_h - \varphi_\psi)}$:
from the lp to γ^*p cross-section
 - Theory expectations
- Summary

SIDIS x-section

A.Kotzinian, Nucl. Phys. B441, 234 (1995). Bacchetta, Diehl, Goeke, Metz, Mulders and Schlegel JHEP 0702:093 (2007).

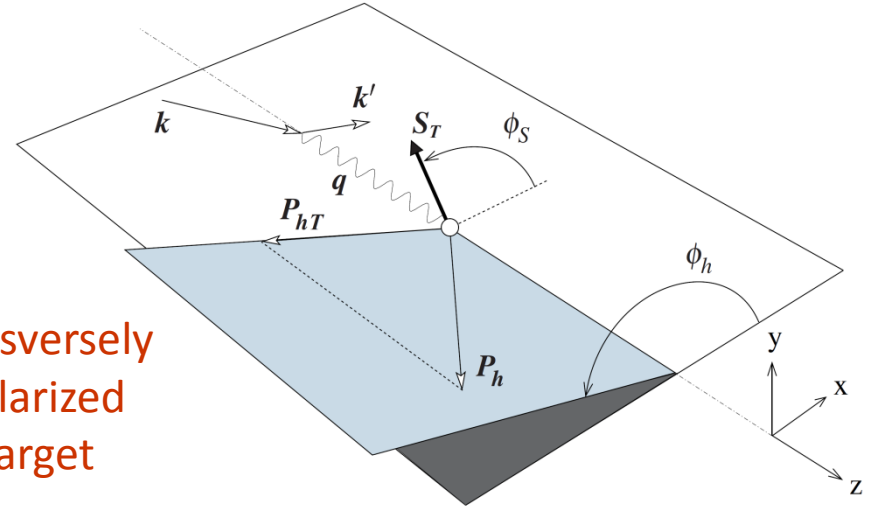
$$\frac{d\sigma}{dx dy dz dP_{hT}^2 d\phi_h d\psi} = \left[\frac{\alpha}{xyQ^2} \frac{y^2}{2(1-\varepsilon)} \left(1 + \frac{\gamma^2}{2x} \right) \right] \times (F_{UU,T} + \varepsilon F_{UU,L}) \times$$

$$A_{U(L),T}^{w(\varphi_h, \varphi_s)} = \frac{F_{U(L),T}^{w(\varphi_h, \varphi_s)}}{F_{UU,T} + \varepsilon F_{UU,L}}$$

$$\varepsilon = \frac{1-y - \frac{1}{4}\gamma^2 y^2}{1-y + \frac{1}{2}y^2 + \frac{1}{4}\gamma^2 y^2}, \quad \gamma = \frac{2Mx}{Q}$$

$$\left[\begin{aligned} & 1 + \cos \varphi_h \times \sqrt{2\varepsilon(1+\varepsilon)} A_{UU}^{\cos \varphi_h} + \cos(2\varphi_h) \times \varepsilon A_{UU}^{\cos(2\varphi_h)} + \lambda \sin \varphi_h \times \sqrt{2\varepsilon(1-\varepsilon)} A_{LU}^{\sin \varphi_h} + \\ & S_L \left[\sqrt{2\varepsilon(1+\varepsilon)} \sin \varphi_h A_{UL}^{\sin \varphi_h} + \varepsilon \sin(2\varphi_h) A_{UL}^{\sin(2\varphi_h)} \right] + \\ & S_L \lambda \left[\sqrt{1-\varepsilon^2} A_{LL} + \sqrt{2\varepsilon(1-\varepsilon)} \cos \varphi_h A_{LL}^{\cos \varphi_h} \right] + \\ & \left. \begin{aligned} & S_T \left[\begin{aligned} & \sin \varphi_s \times \left(\sqrt{2\varepsilon(1+\varepsilon)} A_{UT}^{\sin \varphi_s} \right) + \\ & \sin(\varphi_h - \varphi_s) \times \left(A_{UT}^{\sin(\varphi_h - \varphi_s)} \right) + \\ & \sin(\varphi_h + \varphi_s) \times \left(\varepsilon A_{UT}^{\sin(\varphi_h + \varphi_s)} \right) + \\ & \sin(2\varphi_h - \varphi_s) \times \left(\sqrt{2\varepsilon(1+\varepsilon)} A_{UT}^{\sin(2\varphi_h - \varphi_s)} \right) + \\ & \sin(3\varphi_h - \varphi_s) \times \left(\varepsilon A_{UT}^{\sin(3\varphi_h - \varphi_s)} \right) \end{aligned} \right] + \\ & S_T \lambda \left[\begin{aligned} & \cos \varphi_s \times \left(\sqrt{2\varepsilon(1-\varepsilon)} A_{LT}^{\cos \varphi_s} \right) + \\ & \cos(\varphi_h - \varphi_s) \times \left(\sqrt{(1-\varepsilon^2)} A_{LT}^{\cos(\varphi_h - \varphi_s)} \right) + \\ & \cos(2\varphi_h - \varphi_s) \times \left(\sqrt{2\varepsilon(1-\varepsilon)} A_{LT}^{\cos(2\varphi_h - \varphi_s)} \right) \end{aligned} \right] \end{aligned} \right] \end{aligned}$$

transversely
polarized
target



SIDIS x-section

A.Kotzinian, Nucl. Phys. B441, 234 (1995). Bacchetta, Diehl, Goeke, Metz, Mulders and Schlegel JHEP 0702:093 (2007).

$$\frac{d\sigma}{dx dy dz dP_{hT}^2 d\phi_h d\psi} = \left[\frac{\alpha}{xyQ^2} \frac{y^2}{2(1-\varepsilon)} \left(1 + \frac{\gamma^2}{2x} \right) \right] \times (F_{UU,T} + \varepsilon F_{UU,L}) \times$$

$$\left\{ \begin{aligned} & 1 + \cos \phi_h \times \sqrt{2\varepsilon(1+\varepsilon)} A_{UU}^{\cos \phi_h} + \cos(2\phi_h) \times \varepsilon A_{UU}^{\cos(2\phi_h)} + \lambda \sin \phi_h \times \sqrt{2\varepsilon(1-\varepsilon)} A_{LU}^{\sin \phi_h} + \\ & S_L \left[\sqrt{2\varepsilon(1+\varepsilon)} \sin \phi_h A_{UL}^{\sin \phi_h} + \varepsilon \sin(2\phi_h) A_{UL}^{\sin(2\phi_h)} \right] + \\ & S_L \lambda \left[\sqrt{1-\varepsilon^2} A_{LL} + \sqrt{2\varepsilon(1-\varepsilon)} \cos \phi_h A_{LL}^{\cos \phi_h} \right] + \end{aligned} \right\} \leftarrow \text{Presented by A. Martin}$$

$$\left\{ \begin{aligned} & S_T \left[\begin{aligned} & \sin \varphi_S \times \left(\sqrt{2\varepsilon(1+\varepsilon)} A_{UT}^{\sin \varphi_S} \right) + \\ & \sin(\varphi_h - \varphi_S) \times \left(A_{UT}^{\sin(\varphi_h - \varphi_S)} \right) + \\ & \sin(\varphi_h + \varphi_S) \times \left(\varepsilon A_{UT}^{\sin(\varphi_h + \varphi_S)} \right) + \\ & \sin(2\varphi_h - \varphi_S) \times \left(\sqrt{2\varepsilon(1+\varepsilon)} A_{UT}^{\sin(2\varphi_h - \varphi_S)} \right) + \\ & \sin(3\varphi_h - \varphi_S) \times \left(\varepsilon A_{UT}^{\sin(3\varphi_h - \varphi_S)} \right) \end{aligned} \right] + \\ & S_T \lambda \left[\begin{aligned} & \cos \varphi_S \times \left(\sqrt{2\varepsilon(1-\varepsilon)} A_{LT}^{\cos \varphi_S} \right) + \\ & \cos(\varphi_h - \varphi_S) \times \left(\sqrt{(1-\varepsilon^2)} A_{LT}^{\cos(\varphi_h - \varphi_S)} \right) + \\ & \cos(2\varphi_h - \varphi_S) \times \left(\sqrt{2\varepsilon(1-\varepsilon)} A_{LT}^{\cos(2\varphi_h - \varphi_S)} \right) \end{aligned} \right] \end{aligned} \right\} \leftarrow \text{Presented by A. Bressan}$$

SSA

↑

DSA

↓

Twist-2

SIDIS x-section

A.Kotzinian, Nucl. Phys. B441, 234 (1995). Bacchetta, Diehl, Goeke, Metz, Mulders and Schlegel JHEP 0702:093 (2007).

$$\frac{d\sigma}{dx dy dz dP_{hT}^2 d\phi_h d\psi} = \left[\frac{\alpha}{xyQ^2} \frac{y^2}{2(1-\varepsilon)} \left(1 + \frac{\gamma^2}{2x} \right) \right] \times (F_{UU,T} + \varepsilon F_{UU,L}) \times$$

$$\left\{ \begin{aligned} & 1 + \cos \phi_h \times \sqrt{2\varepsilon(1+\varepsilon)} A_{UU}^{\cos \phi_h} + \cos(2\phi_h) \times \varepsilon A_{UU}^{\cos(2\phi_h)} + \lambda \sin \phi_h \times \sqrt{2\varepsilon(1-\varepsilon)} A_{LU}^{\sin \phi_h} + \\ & S_L \left[\sqrt{2\varepsilon(1+\varepsilon)} \sin \phi_h A_{UL}^{\sin \phi_h} + \varepsilon \sin(2\phi_h) A_{UL}^{\sin(2\phi_h)} \right] + \\ & S_L \lambda \left[\sqrt{1-\varepsilon^2} A_{LL} + \sqrt{2\varepsilon(1-\varepsilon)} \cos \phi_h A_{LL}^{\cos \phi_h} \right] + \end{aligned} \right.$$

$$\left\{ \begin{aligned} & S_T \left[\begin{aligned} & \sin \phi_S \times \left(\sqrt{2\varepsilon(1+\varepsilon)} A_{UT}^{\sin \phi_S} \right) + \\ & \sin(\phi_h - \phi_S) \times \left(A_{UT}^{\sin(\phi_h - \phi_S)} \right) + \\ & \sin(\phi_h + \phi_S) \times \left(\varepsilon A_{UT}^{\sin(\phi_h + \phi_S)} \right) + \\ & \sin(2\phi_h - \phi_S) \times \left(\sqrt{2\varepsilon(1+\varepsilon)} A_{UT}^{\sin(2\phi_h - \phi_S)} \right) + \\ & \sin(3\phi_h - \phi_S) \times \left(\varepsilon A_{UT}^{\sin(3\phi_h - \phi_S)} \right) \end{aligned} \right] + \\ & S_T \lambda \left[\begin{aligned} & \cos \phi_S \times \left(\sqrt{2\varepsilon(1-\varepsilon)} A_{LT}^{\cos \phi_S} \right) + \\ & \cos(\phi_h - \phi_S) \times \left(\sqrt{(1-\varepsilon^2)} A_{LT}^{\cos(\phi_h - \phi_S)} \right) + \\ & \cos(2\phi_h - \phi_S) \times \left(\sqrt{2\varepsilon(1-\varepsilon)} A_{LT}^{\cos(2\phi_h - \phi_S)} \right) \end{aligned} \right] \end{aligned} \right.$$

Sivers & Collins

Pretzelosity

Worm-gear

SSA



DSA



Twist-2

SIDIS x-section

A.Kotzinian, Nucl. Phys. B441, 234 (1995). Bacchetta, Diehl, Goeke, Metz, Mulders and Schlegel JHEP 0702:093 (2007).

$$\frac{d\sigma}{dx dy dz dP_{hT}^2 d\phi_h d\psi} = \left[\frac{\alpha}{xyQ^2} \frac{y^2}{2(1-\varepsilon)} \left(1 + \frac{\gamma^2}{2x} \right) \right] \times (F_{UU,T} + \varepsilon F_{UU,L}) \times$$

$$\left\{ \begin{aligned} & 1 + \cos\phi_h \times \sqrt{2\varepsilon(1+\varepsilon)} A_{UU}^{\cos\phi_h} + \cos(2\phi_h) \times \varepsilon A_{UU}^{\cos(2\phi_h)} + \lambda \sin\phi_h \times \sqrt{2\varepsilon(1-\varepsilon)} A_{LU}^{\sin\phi_h} + \\ & S_L \left[\sqrt{2\varepsilon(1+\varepsilon)} \sin\phi_h A_{UL}^{\sin\phi_h} + \varepsilon \sin(2\phi_h) A_{UL}^{\sin(2\phi_h)} \right] + \\ & S_L \lambda \left[\sqrt{1-\varepsilon^2} A_{LL} + \sqrt{2\varepsilon(1-\varepsilon)} \cos\phi_h A_{LL}^{\cos\phi_h} \right] + \end{aligned} \right.$$

$$\left\{ \begin{aligned} & S_T \left[\begin{aligned} & \sin\phi_S \times \left(\sqrt{2\varepsilon(1+\varepsilon)} A_{UT}^{\sin\phi_S} \right) + \\ & \sin(\phi_h - \phi_S) \times \left(A_{UT}^{\sin(\phi_h - \phi_S)} \right) + \\ & \sin(\phi_h + \phi_S) \times \left(\varepsilon A_{UT}^{\sin(\phi_h + \phi_S)} \right) + \\ & \sin(2\phi_h - \phi_S) \times \left(\sqrt{2\varepsilon(1+\varepsilon)} A_{UT}^{\sin(2\phi_h - \phi_S)} \right) + \\ & \sin(3\phi_h - \phi_S) \times \left(\varepsilon A_{UT}^{\sin(3\phi_h - \phi_S)} \right) \end{aligned} \right] + \\ & S_T \lambda \left[\begin{aligned} & \cos\phi_S \times \left(\sqrt{2\varepsilon(1-\varepsilon)} A_{LT}^{\cos\phi_S} \right) + \\ & \cos(\phi_h - \phi_S) \times \left(\sqrt{(1-\varepsilon^2)} A_{LT}^{\cos(\phi_h - \phi_S)} \right) + \\ & \cos(2\phi_h - \phi_S) \times \left(\sqrt{2\varepsilon(1-\varepsilon)} A_{LT}^{\cos(2\phi_h - \phi_S)} \right) \end{aligned} \right] \end{aligned} \right.$$

Sivers & Collins

Pretzelosity

Worm-gear

Higher twists

SSA

DSA

Twist-2

Twist-3

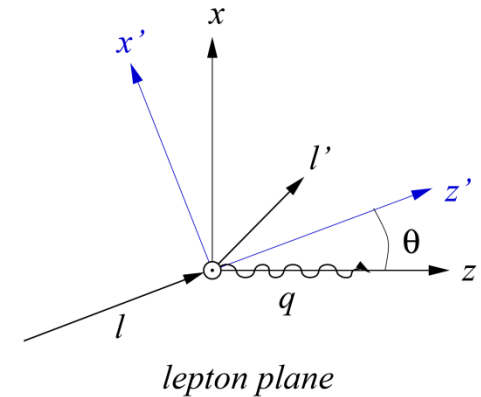


SIDIS x-section

A.Kotzinian, Nucl. Phys. B441, 234 (1995). Bacchetta, Diehl, Goeke, Metz, Mulders and Schlegel JHEP 0702:093 (2007).

$$\frac{d\sigma}{dx dy dz dP_{hT}^2 d\phi_h d\psi} = \left[\frac{\alpha}{xyQ^2} \frac{y^2}{2(1-\varepsilon)} \left(1 + \frac{\gamma^2}{2x} \right) \right] \times (F_{UU,T} + \varepsilon F_{UU,L}) \times$$

$$\left\{ \begin{aligned} & 1 + \cos\phi_h \times \sqrt{2\varepsilon(1+\varepsilon)} A_{UU}^{\cos\phi_h} + \cos(2\phi_h) \times \varepsilon A_{UU}^{\cos(2\phi_h)} + \lambda \sin\phi_h \times \sqrt{2\varepsilon(1-\varepsilon)} A_{LU}^{\sin\phi_h} + \\ & S_L \left[\sqrt{2\varepsilon(1+\varepsilon)} \sin\phi_h A_{UL}^{\sin\phi_h} + \varepsilon \sin(2\phi_h) A_{UL}^{\sin(2\phi_h)} \right] + \\ & S_L \lambda \left[\sqrt{1-\varepsilon^2} A_{LL} + \sqrt{2\varepsilon(1-\varepsilon)} \cos\phi_h A_{LL}^{\cos\phi_h} \right] + \end{aligned} \right.$$



S _T	$\sin\phi_S \times \left(\sqrt{2\varepsilon(1+\varepsilon)} A_{UT}^{\sin\phi_S} \right) +$	<p>Sivers & Collins</p> <p>Pretzelosity</p> <p>Worm-gear</p> <p>Higher twists</p>	<p>SSA</p> <p>↑</p>
	$\sin(\phi_h - \phi_S) \times \left(A_{UT}^{\sin(\phi_h - \phi_S)} \right) +$		
	$\sin(\phi_h + \phi_S) \times \left(\varepsilon A_{UT}^{\sin(\phi_h + \phi_S)} \right) +$		
	$\sin(2\phi_h - \phi_S) \times \left(\sqrt{2\varepsilon(1+\varepsilon)} A_{UT}^{\sin(2\phi_h - \phi_S)} \right) +$		
	$\sin(3\phi_h - \phi_S) \times \left(\varepsilon A_{UT}^{\sin(3\phi_h - \phi_S)} \right) +$		
S _T λ	$\cos\phi_S \times \left(\sqrt{2\varepsilon(1-\varepsilon)} A_{LT}^{\cos\phi_S} \right) +$	<p>Higher twists</p> <p>↓</p> <p>DSA</p>	
	$\cos(\phi_h - \phi_S) \times \left(\sqrt{(1-\varepsilon^2)} A_{LT}^{\cos(\phi_h - \phi_S)} \right) +$		
	$\cos(2\phi_h - \phi_S) \times \left(\sqrt{2\varepsilon(1-\varepsilon)} A_{LT}^{\cos(2\phi_h - \phi_S)} \right) +$		

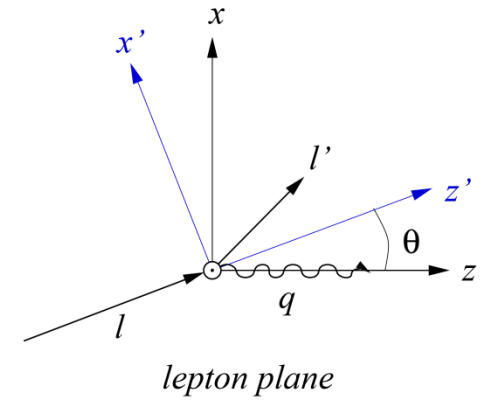




SIDIS x-section

$$\frac{d\sigma}{dx dy dz dP_{hT}^2 d\varphi_h d\psi} = \left[\frac{\alpha}{xyQ^2} \frac{y^2}{2(1-\varepsilon)} \left(1 + \frac{\gamma^2}{2x} \right) \right] \times (F_{UU,T} + \varepsilon F_{UU,L}) \times$$

$$\left[\begin{array}{l} 1 + \cos \varphi_h \times \sqrt{2\varepsilon(1+\varepsilon)} A_{UU}^{\cos \varphi_h} + \cos(2\varphi_h) \times \varepsilon A_{UU}^{\cos(2\varphi_h)} + \lambda \sin \varphi_h \times \sqrt{2\varepsilon(1-\varepsilon)} A_{LU}^{\sin \varphi_h} + \\ S_T \left[\begin{array}{l} \sin \varphi_S \times \left(\sqrt{2\varepsilon(1+\varepsilon)} A_{UT}^{\sin \varphi_S} \right) + \\ \sin(\varphi_h - \varphi_S) \times \left(A_{UT}^{\sin(\varphi_h - \varphi_S)} \right) + \\ \sin(\varphi_h + \varphi_S) \times \left(\varepsilon A_{UT}^{\sin(\varphi_h + \varphi_S)} \right) + \\ \sin(2\varphi_h - \varphi_S) \times \left(\sqrt{2\varepsilon(1+\varepsilon)} A_{UT}^{\sin(2\varphi_h - \varphi_S)} \right) + \\ \sin(3\varphi_h - \varphi_S) \times \left(\varepsilon A_{UT}^{\sin(3\varphi_h - \varphi_S)} \right) + \\ S_T \lambda \left[\begin{array}{l} \cos \varphi_S \times \left(\sqrt{2\varepsilon(1-\varepsilon)} A_{LT}^{\cos \varphi_S} \right) + \\ \cos(\varphi_h - \varphi_S) \times \left(\sqrt{1-\varepsilon^2} A_{LT}^{\cos(\varphi_h - \varphi_S)} \right) + \\ \cos(2\varphi_h - \varphi_S) \times \left(\sqrt{2\varepsilon(1-\varepsilon)} A_{LT}^{\cos(2\varphi_h - \varphi_S)} \right) + \end{array} \right] \end{array} \right] \end{array} \right]$$



$$\sin \theta = \gamma \sqrt{\frac{1 - y - \frac{1}{4} \gamma^2 y^2}{1 + \gamma^2}}, \quad \gamma = \frac{2Mx}{Q};$$

$\theta \xrightarrow{\text{Bjorken limit}} 0 \Rightarrow S_T \simeq P_T, S_L \simeq P_L$

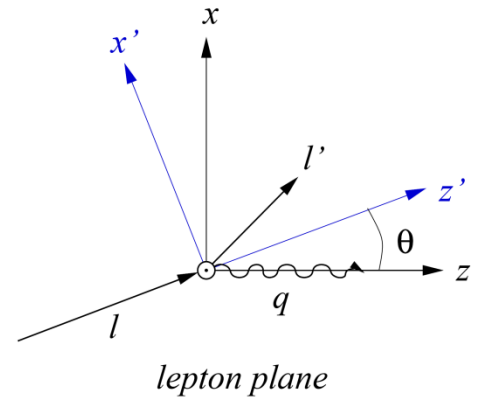
SIDIS x-section: from lp to γ^*p ($P_L=0$)

Kotzinian et al.
 hep-ph/9808368 (1998)
 hep-ph/9908466 (1999)
 M. Diehl and S. Sapeta,
 Eur. Phys. J. C 41 (2005) 515



$$\frac{d\sigma}{dx dy dz dP_{hT}^2 d\varphi_h d\varphi_S} = \left[\frac{\cos\theta}{1 - \sin^2\theta \sin^2\varphi_S} \right] \times \left[\frac{\alpha}{xyQ^2} \frac{y^2}{2(1-\varepsilon)} \left(1 + \frac{\gamma^2}{2x} \right) \right] \times (F_{UU,T} + \varepsilon F_{UU,L}) \times$$

$$\left[\begin{aligned} & 1 + \cos\varphi_h \times \sqrt{2\varepsilon(1+\varepsilon)} A_{UU}^{\cos\varphi_h} + \cos(2\varphi_h) \times \varepsilon A_{UU}^{\cos(2\varphi_h)} + \lambda \sin\varphi_h \times \sqrt{2\varepsilon(1-\varepsilon)} A_{LU}^{\sin\varphi_h} + \\ & \left. \begin{aligned} & \frac{P_T}{\sqrt{1 - \sin^2\theta \sin^2\varphi_S}} \left[\begin{aligned} & \sin\varphi_S \times \left(\frac{\cos\theta \sqrt{2\varepsilon(1+\varepsilon)} A_{UT}^{\sin\varphi_S}}{\sin(\varphi_h - \varphi_S) \times \left(\frac{\cos\theta A_{UT}^{\sin(\varphi_h - \varphi_S)} + \frac{1}{2} \sin\theta \sqrt{2\varepsilon(1+\varepsilon)} A_{UL}^{\sin\varphi_h} \right)} + \right. \right. \\ & \sin(\varphi_h + \varphi_S) \times \left(\frac{\cos\theta \varepsilon A_{UT}^{\sin(\varphi_h + \varphi_S)} + \frac{1}{2} \sin\theta \sqrt{2\varepsilon(1+\varepsilon)} A_{UL}^{\sin\varphi_h} \right) + \\ & \left. \left. \sin(2\varphi_h - \varphi_S) \times \left(\frac{\cos\theta \sqrt{2\varepsilon(1+\varepsilon)} A_{UT}^{\sin(2\varphi_h - \varphi_S)} + \frac{1}{2} \sin\theta \varepsilon A_{UL}^{\sin 2\varphi_h} \right) + \right. \right. \\ & \left. \left. \sin(3\varphi_h - \varphi_S) \times \left(\frac{\cos\theta \varepsilon A_{UT}^{\sin(3\varphi_h - \varphi_S)} \right) + \right. \right. \\ & \left. \left. \sin(2\varphi_h + \varphi_S) \times \left(\frac{1}{2} \sin\theta \varepsilon A_{UL}^{\sin 2\varphi_h} \right) \right] \right. \right. \\ & \left. \left. \frac{P_T \lambda}{\sqrt{1 - \sin^2\theta \sin^2\varphi_S}} \left[\begin{aligned} & \cos\varphi_S \times \left(\frac{\cos\theta \sqrt{2\varepsilon(1-\varepsilon)} A_{LT}^{\cos\varphi_S} + \sin\theta \sqrt{(1-\varepsilon^2)} A_{LL}}{\cos(\varphi_h - \varphi_S) \times \left(\frac{\cos\theta \sqrt{(1-\varepsilon^2)} A_{LT}^{\cos(\varphi_h - \varphi_S)} + \frac{1}{2} \sin\theta \sqrt{2\varepsilon(1-\varepsilon)} A_{LL}^{\cos\varphi_h} \right)} + \right. \right. \\ & \cos(2\varphi_h - \varphi_S) \times \left(\frac{\cos\theta \sqrt{2\varepsilon(1-\varepsilon)} A_{LT}^{\cos(2\varphi_h - \varphi_S)} \right) + \\ & \left. \left. \cos(\varphi_h + \varphi_S) \times \left(\frac{1}{2} \sin\theta \sqrt{2\varepsilon(1-\varepsilon)} A_{LL}^{\cos\varphi_h} \right) \right] \right. \right. \end{aligned} \right] \end{aligned} \right. \end{aligned}$$



$$\sin\theta = \gamma \sqrt{\frac{1 - y - \frac{1}{4} \gamma^2 y^2}{1 + \gamma^2}}, \quad \gamma = \frac{2Mx}{Q}$$

$\theta \xrightarrow{\text{Bjorken limit}} 0 \Rightarrow S_T \approx P_T, S_L \approx P_L$

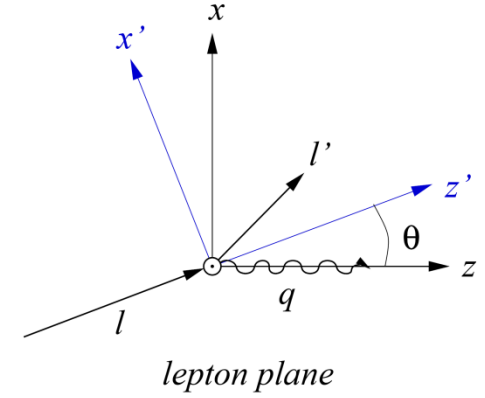
SIDIS x-section: from lp to γ^*p ($P_L=0$)

Kotzinian et al.
 hep-ph/9808368 (1998)
 hep-ph/9908466 (1999)
 M. Diehl and S. Sapeta,
 Eur. Phys. J. C 41 (2005) 515

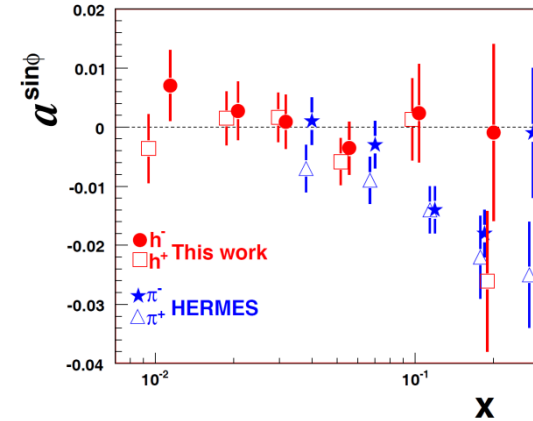


$$\frac{d\sigma}{dx dy dz dP_{hT}^2 d\varphi_h d\varphi_S} = \left[\frac{\cos\theta}{1 - \sin^2\theta \sin^2\varphi_S} \right] \times \left[\frac{\alpha}{xyQ^2} \frac{y^2}{2(1-\varepsilon)} \left(1 + \frac{\gamma^2}{2x} \right) \right] \times (F_{UU,T} + \varepsilon F_{UU,L}) \times$$

$$\begin{aligned} & 1 + \cos\varphi_h \times \sqrt{2\varepsilon(1+\varepsilon)} A_{UU}^{\cos\varphi_h} + \cos(2\varphi_h) \times \varepsilon A_{UU}^{\cos(2\varphi_h)} + \lambda \sin\varphi_h \times \sqrt{2\varepsilon(1-\varepsilon)} A_{LU}^{\sin\varphi_h} + \\ & \left[\begin{aligned} & \sin\varphi_S \times \left(\cos\theta \sqrt{2\varepsilon(1+\varepsilon)} A_{UT}^{\sin\varphi_S} \right) + \\ & \sin(\varphi_h - \varphi_S) \times \left(\cos\theta A_{UT}^{\sin(\varphi_h - \varphi_S)} + \frac{1}{2} \sin\theta \sqrt{2\varepsilon(1+\varepsilon)} A_{UL}^{\sin\varphi_h} \right) + \\ & \sin(\varphi_h + \varphi_S) \times \left(\cos\theta \varepsilon A_{UT}^{\sin(\varphi_h + \varphi_S)} + \frac{1}{2} \sin\theta \sqrt{2\varepsilon(1+\varepsilon)} A_{UL}^{\sin\varphi_h} \right) + \\ & \sin(2\varphi_h - \varphi_S) \times \left(\cos\theta \sqrt{2\varepsilon(1+\varepsilon)} A_{UT}^{\sin(2\varphi_h - \varphi_S)} + \frac{1}{2} \sin\theta \varepsilon A_{UL}^{\sin 2\varphi_h} \right) + \\ & \sin(3\varphi_h - \varphi_S) \times \left(\cos\theta \varepsilon A_{UT}^{\sin(3\varphi_h - \varphi_S)} \right) + \\ & \sin(2\varphi_h + \varphi_S) \times \left(\frac{1}{2} \sin\theta \varepsilon A_{UL}^{\sin 2\varphi_h} \right) \end{aligned} \right] + \\ & \left[\begin{aligned} & \cos\varphi_S \times \left(\cos\theta \sqrt{2\varepsilon(1-\varepsilon)} A_{LT}^{\cos\varphi_S} + \sin\theta \sqrt{(1-\varepsilon^2)} A_{LL} \right) + \\ & \cos(\varphi_h - \varphi_S) \times \left(\cos\theta \sqrt{(1-\varepsilon^2)} A_{LT}^{\cos(\varphi_h - \varphi_S)} + \frac{1}{2} \sin\theta \sqrt{2\varepsilon(1-\varepsilon)} A_{LL}^{\cos\varphi_h} \right) + \\ & \cos(2\varphi_h - \varphi_S) \times \left(\cos\theta \sqrt{2\varepsilon(1-\varepsilon)} A_{LT}^{\cos(2\varphi_h - \varphi_S)} \right) + \\ & \cos(\varphi_h + \varphi_S) \times \left(\frac{1}{2} \sin\theta \sqrt{2\varepsilon(1-\varepsilon)} A_{LL}^{\cos\varphi_h} \right) \end{aligned} \right] \\ & \frac{P_T}{\sqrt{1 - \sin^2\theta \sin^2\varphi_S}} \quad \frac{P_T \lambda}{\sqrt{1 - \sin^2\theta \sin^2\varphi_S}} \end{aligned}$$



Eur.Phys.J.C70:39-49,2010



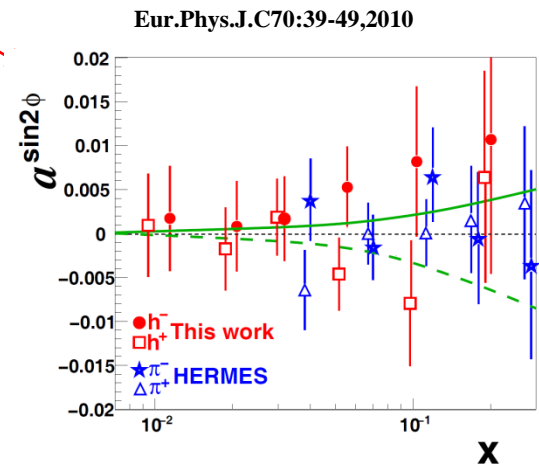
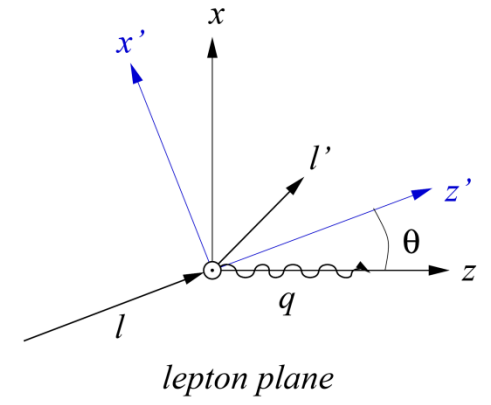


SIDIS x-section: from lp to γ^*p ($P_L=0$)

Kotzinian et al.
 hep-ph/9808368 (1998)
 hep-ph/9908466 (1999)
 M. Diehl and S. Sapeta,
 Eur. Phys. J. C 41 (2005) 515

$$\frac{d\sigma}{dx dy dz dP_{hT}^2 d\varphi_h d\varphi_S} = \left[\frac{\cos\theta}{1 - \sin^2\theta \sin^2\varphi_S} \right] \times \left[\frac{\alpha}{xyQ^2} \frac{y^2}{2(1-\varepsilon)} \left(1 + \frac{\gamma^2}{2x} \right) \right] \times (F_{UU,T} + \varepsilon F_{UU,L}) \times$$

$$\left[\begin{aligned} & 1 + \cos\varphi_h \times \sqrt{2\varepsilon(1+\varepsilon)} A_{UU}^{\cos\varphi_h} + \cos(2\varphi_h) \times \varepsilon A_{UU}^{\cos(2\varphi_h)} + \lambda \sin\varphi_h \times \sqrt{2\varepsilon(1-\varepsilon)} A_{LU}^{\sin\varphi_h} + \\ & \left[\begin{aligned} & \sin\varphi_S \times \left(\cos\theta \sqrt{2\varepsilon(1+\varepsilon)} A_{UT}^{\sin\varphi_S} \right) + \\ & \sin(\varphi_h - \varphi_S) \times \left(\cos\theta A_{UT}^{\sin(\varphi_h - \varphi_S)} + \frac{1}{2} \sin\theta \sqrt{2\varepsilon(1+\varepsilon)} A_{UL}^{\sin\varphi_h} \right) + \\ & \sin(\varphi_h + \varphi_S) \times \left(\cos\theta \varepsilon A_{UT}^{\sin(\varphi_h + \varphi_S)} + \frac{1}{2} \sin\theta \sqrt{2\varepsilon(1+\varepsilon)} A_{UL}^{\sin\varphi_h} \right) + \\ & \sin(2\varphi_h - \varphi_S) \times \left(\cos\theta \sqrt{2\varepsilon(1+\varepsilon)} A_{UT}^{\sin(2\varphi_h - \varphi_S)} + \frac{1}{2} \sin\theta \varepsilon A_{UL}^{\sin 2\varphi_h} \right) + \\ & \sin(3\varphi_h - \varphi_S) \times \left(\cos\theta \varepsilon A_{UT}^{\sin(3\varphi_h - \varphi_S)} \right) + \\ & \sin(2\varphi_h + \varphi_S) \times \left(\frac{1}{2} \sin\theta \varepsilon A_{UL}^{\sin 2\varphi_h} \right) \end{aligned} \right] + \\ & \left[\begin{aligned} & \cos\varphi_S \times \left(\cos\theta \sqrt{2\varepsilon(1-\varepsilon)} A_{LT}^{\cos\varphi_S} + \sin\theta \sqrt{(1-\varepsilon^2)} A_{LL} \right) + \\ & \cos(\varphi_h - \varphi_S) \times \left(\cos\theta \sqrt{(1-\varepsilon^2)} A_{LT}^{\cos(\varphi_h - \varphi_S)} + \frac{1}{2} \sin\theta \sqrt{2\varepsilon(1-\varepsilon)} A_{LL}^{\cos\varphi_h} \right) + \\ & \cos(2\varphi_h - \varphi_S) \times \left(\cos\theta \sqrt{2\varepsilon(1-\varepsilon)} A_{LT}^{\cos(2\varphi_h - \varphi_S)} \right) + \\ & \cos(\varphi_h + \varphi_S) \times \left(\frac{1}{2} \sin\theta \sqrt{2\varepsilon(1-\varepsilon)} A_{LL}^{\cos\varphi_h} \right) \end{aligned} \right] \end{aligned} \right] \times \frac{P_T}{\sqrt{1 - \sin^2\theta \sin^2\varphi_S}}$$



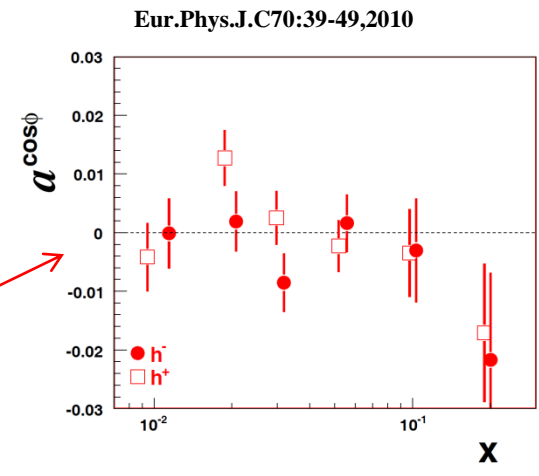
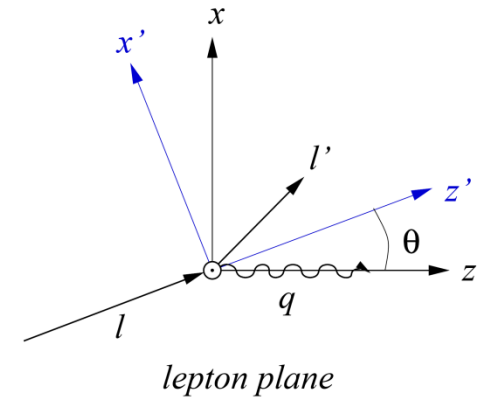
SIDIS x-section: from lp to γ^*p ($P_L=0$)

Kotzinian et al.
 hep-ph/9808368 (1998)
 hep-ph/9908466 (1999)
 M. Diehl and S. Sapeta,
 Eur. Phys. J. C 41 (2005) 515



$$\frac{d\sigma}{dx dy dz dP_{hT}^2 d\varphi_h d\varphi_S} = \left[\frac{\cos\theta}{1 - \sin^2\theta \sin^2\varphi_S} \right] \times \left[\frac{\alpha}{xyQ^2} \frac{y^2}{2(1-\varepsilon)} \left(1 + \frac{\gamma^2}{2x} \right) \right] \times (F_{UU,T} + \varepsilon F_{UU,L}) \times$$

$$\left[\begin{aligned} & 1 + \cos\varphi_h \times \sqrt{2\varepsilon(1+\varepsilon)} A_{UU}^{\cos\varphi_h} + \cos(2\varphi_h) \times \varepsilon A_{UU}^{\cos(2\varphi_h)} + \lambda \sin\varphi_h \times \sqrt{2\varepsilon(1-\varepsilon)} A_{LU}^{\sin\varphi_h} + \\ & \left[\begin{aligned} & \sin\varphi_S \times \left(\cos\theta \sqrt{2\varepsilon(1+\varepsilon)} A_{UT}^{\sin\varphi_S} \right) + \\ & \sin(\varphi_h - \varphi_S) \times \left(\cos\theta A_{UT}^{\sin(\varphi_h - \varphi_S)} + \frac{1}{2} \sin\theta \sqrt{2\varepsilon(1+\varepsilon)} A_{UL}^{\sin\varphi_h} \right) + \\ & \sin(\varphi_h + \varphi_S) \times \left(\cos\theta \varepsilon A_{UT}^{\sin(\varphi_h + \varphi_S)} + \frac{1}{2} \sin\theta \sqrt{2\varepsilon(1+\varepsilon)} A_{UL}^{\sin\varphi_h} \right) + \\ & \sin(2\varphi_h - \varphi_S) \times \left(\cos\theta \sqrt{2\varepsilon(1+\varepsilon)} A_{UT}^{\sin(2\varphi_h - \varphi_S)} + \frac{1}{2} \sin\theta \varepsilon A_{UL}^{\sin 2\varphi_h} \right) + \\ & \sin(3\varphi_h - \varphi_S) \times \left(\cos\theta \varepsilon A_{UT}^{\sin(3\varphi_h - \varphi_S)} \right) + \\ & \sin(2\varphi_h + \varphi_S) \times \left(\frac{1}{2} \sin\theta \varepsilon A_{UL}^{\sin 2\varphi_h} \right) \end{aligned} \right] + \\ & \left[\begin{aligned} & \cos\varphi_S \times \left(\cos\theta \sqrt{2\varepsilon(1-\varepsilon)} A_{LT}^{\cos\varphi_S} + \sin\theta \sqrt{(1-\varepsilon^2)} A_{LL} \right) + \\ & \cos(\varphi_h - \varphi_S) \times \left(\cos\theta \sqrt{(1-\varepsilon^2)} A_{LT}^{\cos(\varphi_h - \varphi_S)} + \frac{1}{2} \sin\theta \sqrt{2\varepsilon(1-\varepsilon)} A_{LL}^{\cos\varphi_h} \right) + \\ & \cos(2\varphi_h - \varphi_S) \times \left(\cos\theta \sqrt{2\varepsilon(1-\varepsilon)} A_{LT}^{\cos(2\varphi_h - \varphi_S)} \right) + \\ & \cos(\varphi_h + \varphi_S) \times \left(\frac{1}{2} \sin\theta \sqrt{2\varepsilon(1-\varepsilon)} A_{LL}^{\cos\varphi_h} \right) \end{aligned} \right] \end{aligned} \right]$$

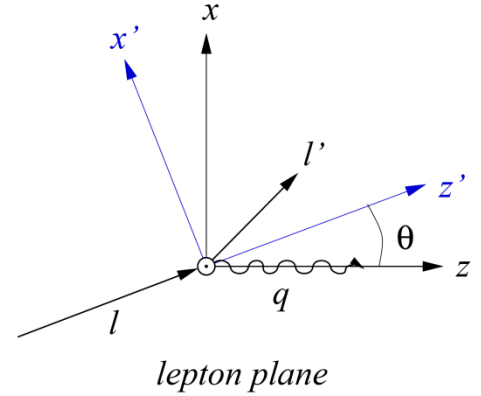


SIDIS x-section: from lp to γ^*p ($P_L=0$)

Kotzinian et al.
 hep-ph/9808368 (1998)
 hep-ph/9908466 (1999)
 M. Diehl and S. Sapeta,
 Eur. Phys. J. C 41 (2005) 515

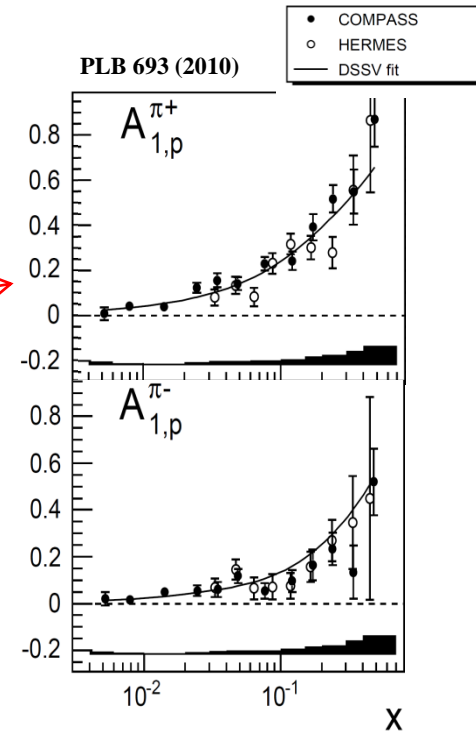


$$\frac{d\sigma}{dx dy dz dP_{hT}^2 d\varphi_h d\varphi_S} = \left[\frac{\cos\theta}{1 - \sin^2\theta \sin^2\varphi_S} \right] \times \left[\frac{\alpha}{xyQ^2} \frac{y^2}{2(1-\varepsilon)} \left(1 + \frac{\gamma^2}{2x} \right) \right] \times (F_{UU,T} + \varepsilon F_{UU,L}) \times$$



$$\frac{P_T}{\sqrt{1 - \sin^2\theta \sin^2\varphi_S}} \left[\begin{aligned} & 1 + \cos\varphi_h \times \sqrt{2\varepsilon(1+\varepsilon)} A_{UU}^{\cos\varphi_h} + \cos(2\varphi_h) \times \varepsilon A_{UU}^{\cos(2\varphi_h)} + \lambda \sin\varphi_h \times \sqrt{2\varepsilon(1-\varepsilon)} A_{LU}^{\sin\varphi_h} + \\ & \sin\varphi_S \times \left(\cos\theta \sqrt{2\varepsilon(1+\varepsilon)} A_{UT}^{\sin\varphi_S} \right) + \\ & \sin(\varphi_h - \varphi_S) \times \left(\cos\theta A_{UT}^{\sin(\varphi_h - \varphi_S)} + \frac{1}{2} \sin\theta \sqrt{2\varepsilon(1+\varepsilon)} A_{UL}^{\sin\varphi_h} \right) + \\ & \sin(\varphi_h + \varphi_S) \times \left(\cos\theta \varepsilon A_{UT}^{\sin(\varphi_h + \varphi_S)} + \frac{1}{2} \sin\theta \sqrt{2\varepsilon(1+\varepsilon)} A_{UL}^{\sin\varphi_h} \right) + \\ & \sin(2\varphi_h - \varphi_S) \times \left(\cos\theta \sqrt{2\varepsilon(1+\varepsilon)} A_{UT}^{\sin(2\varphi_h - \varphi_S)} + \frac{1}{2} \sin\theta \varepsilon A_{UL}^{\sin 2\varphi_h} \right) + \\ & \sin(3\varphi_h - \varphi_S) \times \left(\cos\theta \varepsilon A_{UT}^{\sin(3\varphi_h - \varphi_S)} \right) + \\ & \sin(2\varphi_h + \varphi_S) \times \left(\frac{1}{2} \sin\theta \varepsilon A_{UL}^{\sin 2\varphi_h} \right) \end{aligned} \right] +$$

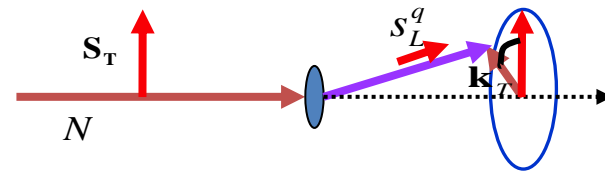
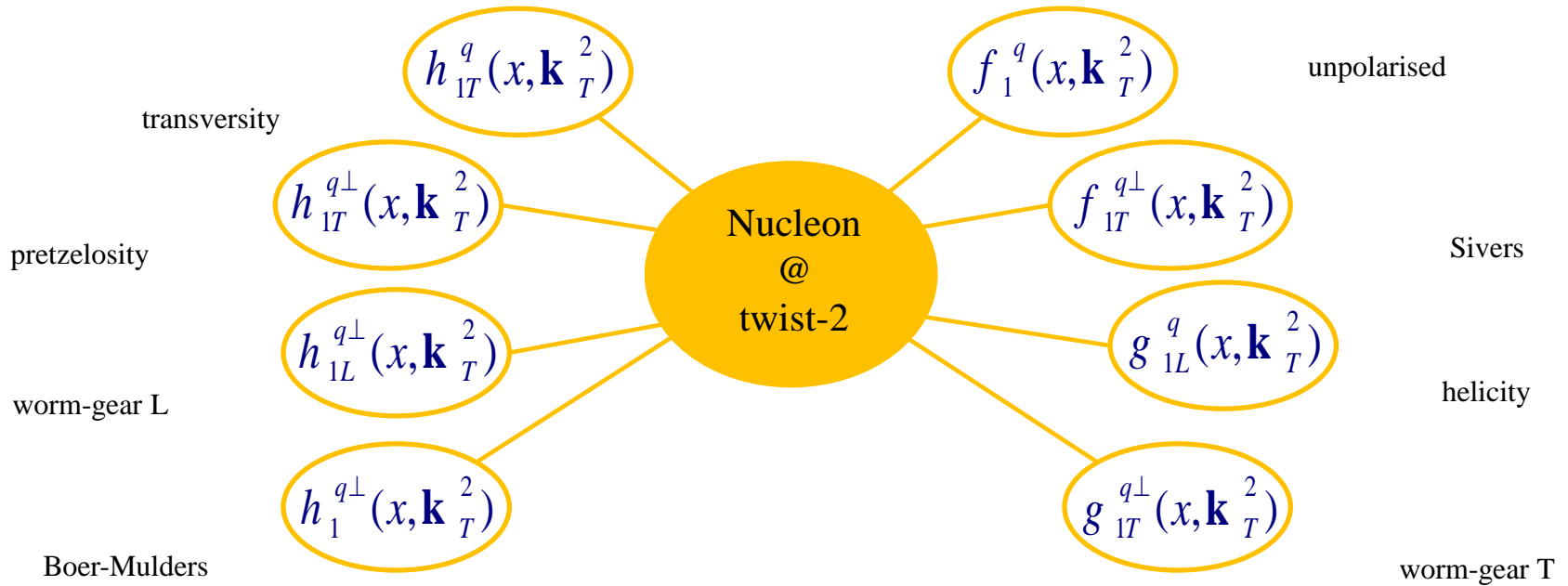
$$\frac{P_T \lambda}{\sqrt{1 - \sin^2\theta \sin^2\varphi_S}} \left[\begin{aligned} & \cos\varphi_S \times \left(\cos\theta \sqrt{2\varepsilon(1-\varepsilon)} A_{LT}^{\cos\varphi_S} + \sin\theta \sqrt{(1-\varepsilon^2)} A_{LL} \right) + \\ & \cos(\varphi_h - \varphi_S) \times \left(\cos\theta \sqrt{(1-\varepsilon^2)} A_{LT}^{\cos(\varphi_h - \varphi_S)} + \frac{1}{2} \sin\theta \sqrt{2\varepsilon(1-\varepsilon)} A_{LL}^{\cos\varphi_h} \right) + \\ & \cos(2\varphi_h - \varphi_S) \times \left(\cos\theta \sqrt{2\varepsilon(1-\varepsilon)} A_{LT}^{\cos(2\varphi_h - \varphi_S)} \right) + \\ & \cos(\varphi_h + \varphi_S) \times \left(\frac{1}{2} \sin\theta \sqrt{2\varepsilon(1-\varepsilon)} A_{LL}^{\cos\varphi_h} \right) \end{aligned} \right]$$



TMD parton distribution functions

Collins, Soper (81,82); Ji, Ma, Yuan (03, 04); Collins, Metz (04) – Definition of TMD DF's and FF's & QCD factorization of SIDIS.

LO QCD = Simple parton model + Factorized twist-2 PDF & FF

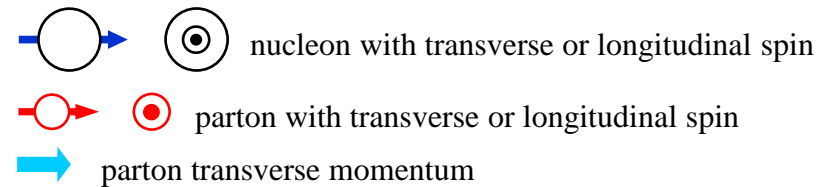
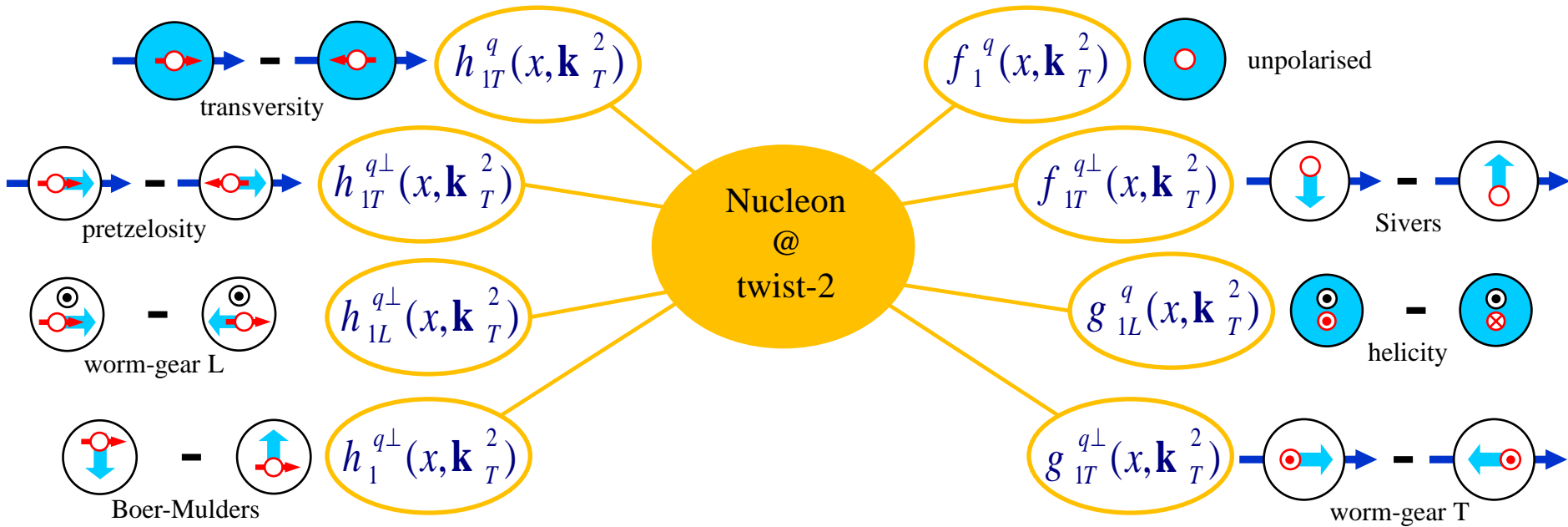


\mathbf{k}_T – intrinsic transverse momentum of the quark

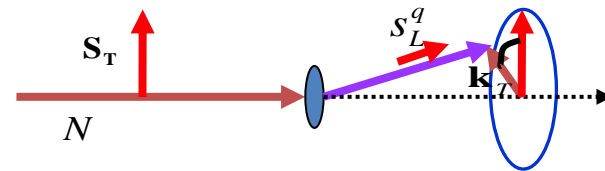
TMD parton distribution functions

Collins, Soper (81,82); Ji, Ma, Yuan (03, 04); Collins, Metz (04) – Definition of TMD DF's and FF's & QCD factorization of SIDIS.

LO QCD = Simple parton model + Factorized twist-2 PDF & FF



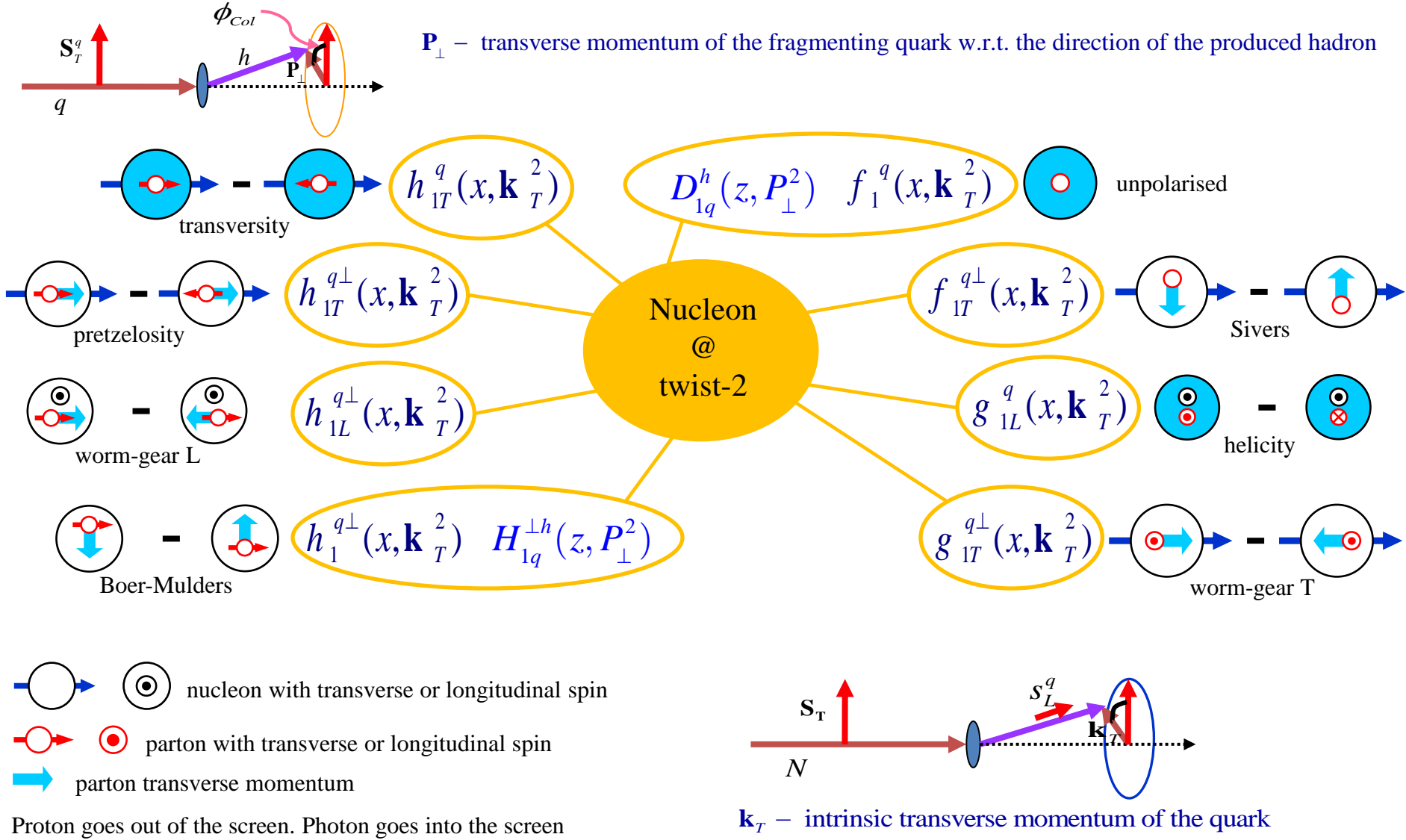
Proton goes out of the screen. Photon goes into the screen



\mathbf{k}_T – intrinsic transverse momentum of the quark

TMD parton distribution functions and FFs

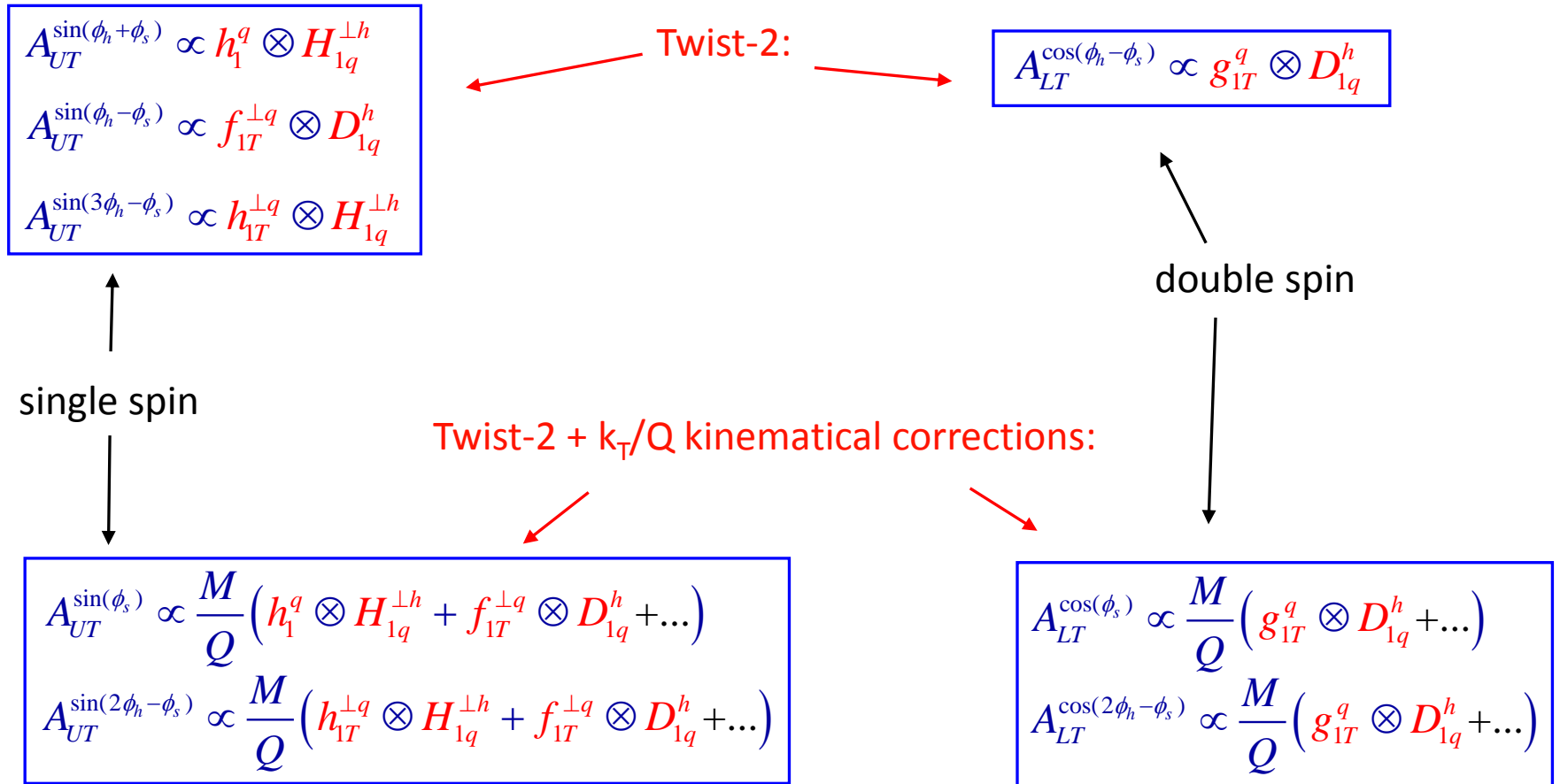
Collins, Soper (81,82); Ji, Ma, Yuan (03, 04); Collins, Metz (04) – Definition of TMD DF's and FF's & QCD factorization of SIDIS.



Interpretation of the transverse asymmetries

Bacchetta, Diehl, Goeke, Metz, Mulders and Schlegel JHEP 0702:093 (2007).

Within QCD parton model $\uparrow A_i \propto DF \otimes FF \quad (i=1,..8)$





From “raw” to physics asymmetries

$$A_{UT}^{w(\phi_h, \phi_s)} = \frac{A_{UT, raw}^{w(\phi_h, \phi_s)}}{D^{w(\phi_h, \phi_s)}(y) f |P_T|}, A_{LT}^{w(\phi_h, \phi_s)} = \frac{A_{LT, raw}^{w(\phi_h, \phi_s)}}{D^{w(\phi_h, \phi_s)}(y) f P_{beam} |P_T|}$$

$$D^{\sin(\phi_h - \phi_s)}(y) = 1$$

$$D^{\sin(\phi_h + \phi_s)}(y) = D^{\sin(3\phi_h - \phi_s)}(y) = \varepsilon \approx \frac{2(1-y)}{1+(1-y)^2}$$

$$D^{\sin(2\phi_h - \phi_s)}(y) = D^{\sin(\phi_s)}(y) = \sqrt{2\varepsilon(1+\varepsilon)} \approx \frac{2(2-y)\sqrt{1-y}}{1+(1-y)^2}$$

$$D^{\cos(2\phi_h - \phi_s)}(y) = D^{\cos(\phi_s)}(y) = \sqrt{2\varepsilon(1-\varepsilon)} \approx \frac{2y\sqrt{1-y}}{1+(1-y)^2}$$

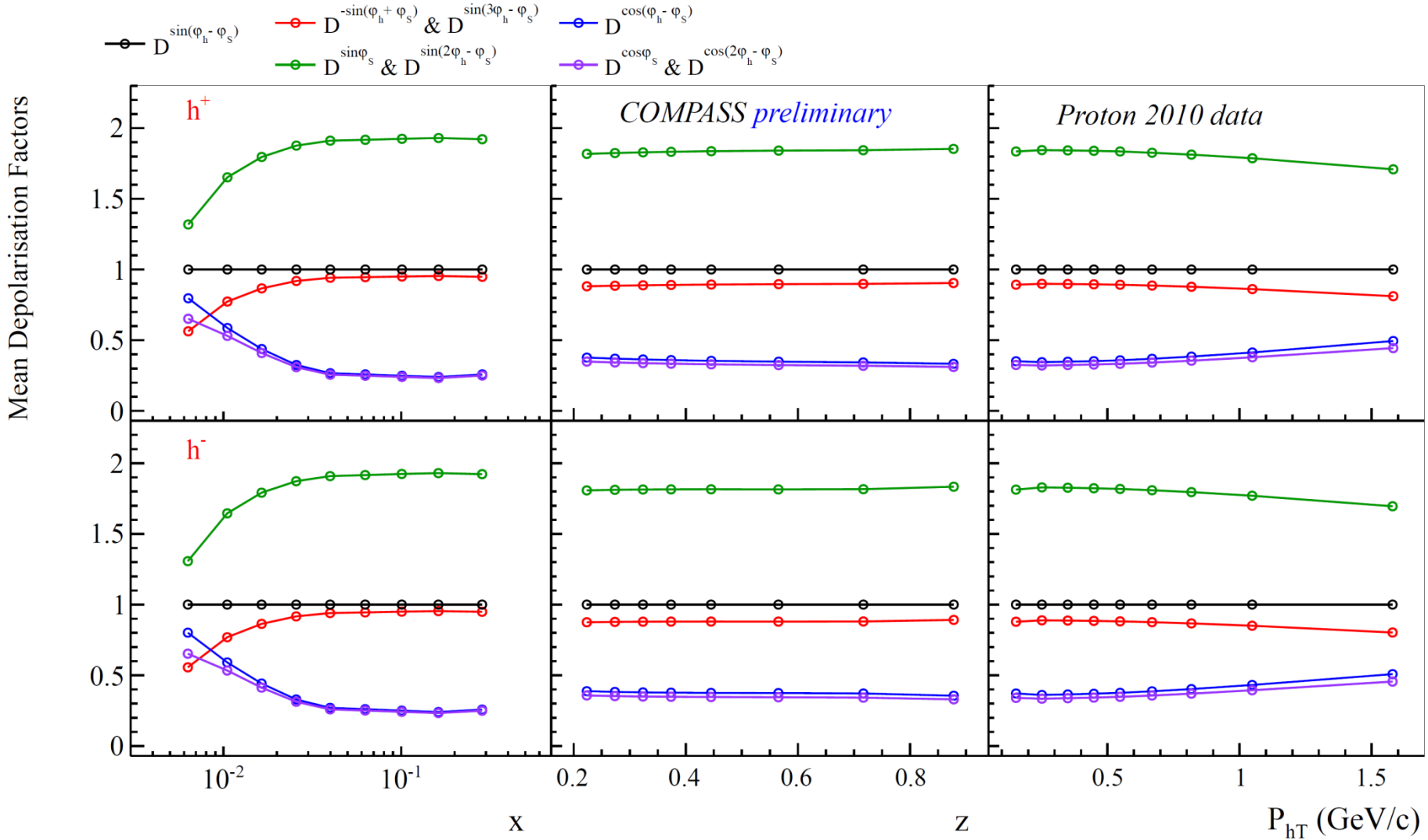
$$D^{\cos(\phi_h - \phi_s)}(y) = \sqrt{(1-\varepsilon^2)} \approx \frac{y(2-y)}{1+(1-y)^2}$$

$$\varepsilon = \frac{1-y - \frac{1}{4}\gamma^2 y^2}{1-y + \frac{1}{2}y^2 + \frac{1}{4}\gamma^2 y^2}, \quad \gamma = \frac{2Mx}{Q}$$

$D^{w_i(\phi_h, \phi_s)}$ – Depolarization factor, f - target dilution factor, P_T - target polarization, P_{beam} - beam polarization



Mean Depolarization Factors





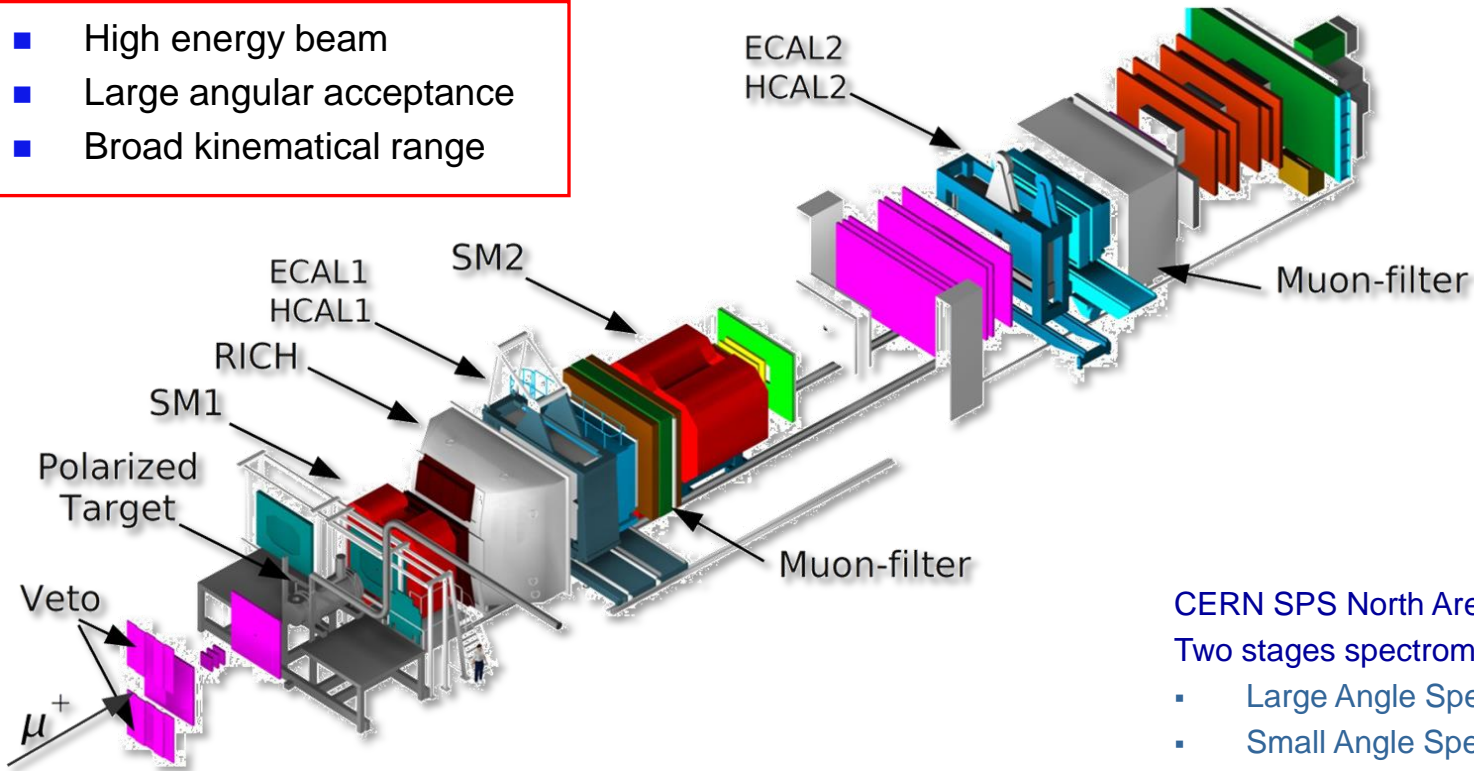
Outline

- Introduction
- **COMPASS experiment**
- Measured asymmetries and theory expectations
 - Re-evaluation of $A_{LT}^{\cos\varphi_S}$ and $A_{LT}^{\cos(\varphi_h - \varphi_\psi)}$:
from the lp to γ^*p cross-section
 - Theory expectations
- Summary

COMPASS experimental setup

Common Muon Proton Apparatus for Structure and Spectroscopy

- High energy beam
- Large angular acceptance
- Broad kinematical range



CERN SPS North Area.

Two stages spectrometer

- Large Angle Spectrometer (SM1)
- Small Angle Spectrometer (SM2)

Hadron & Muon high energy beams.

Beam rates: 10^8 muons/s, $5 \cdot 10^7$ hadrons/s.

Longitudinally polarized μ^+ beam (160 GeV/c).

Longitudinally or Transversely polarized ${}^6\text{LiD}$ or NH_3 target

Momentum, tracking and calorimetric measurements, PID

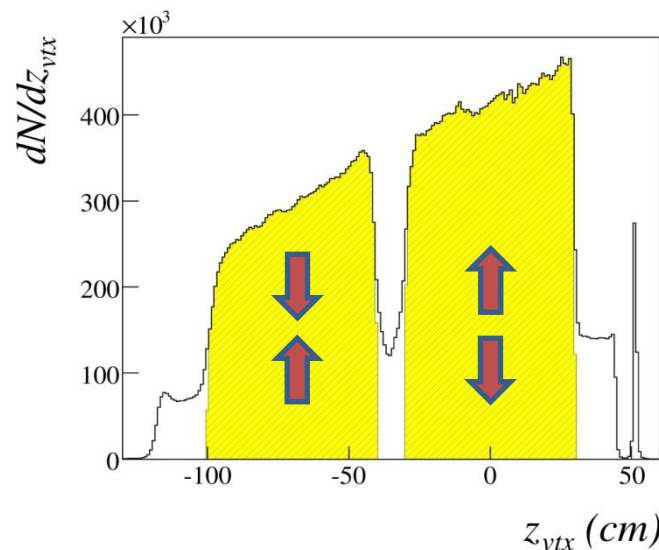
COMPASS Polarized target system

solid state target operated in frozen spin mode

Years 2002-2004

Deuteron - ${}^6\text{LiD}$:

- Two 60 cm long ${}^6\text{LiD}$ cells with opposite polarization
- Polar angle acceptance – 70 mrad
- Target Polarization $\pm 50\%$
- dilution factor $f = 0.38$

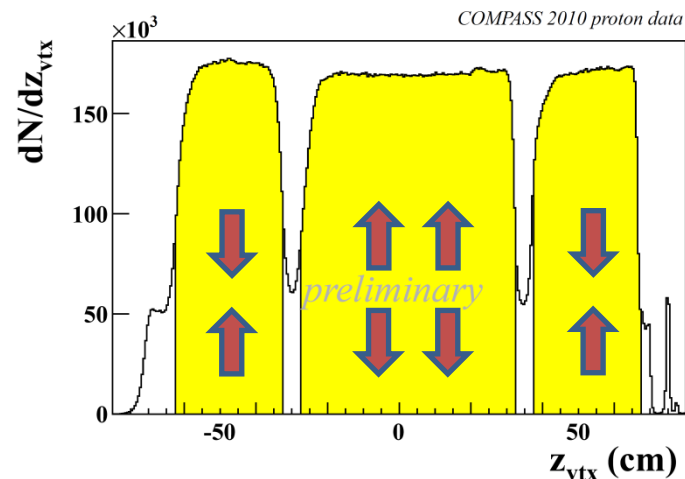


Data is collected simultaneously for the two target spin orientations
Polarization reversal after each ~4-5 days

Years 2007 and 2010

Proton - NH_3 :

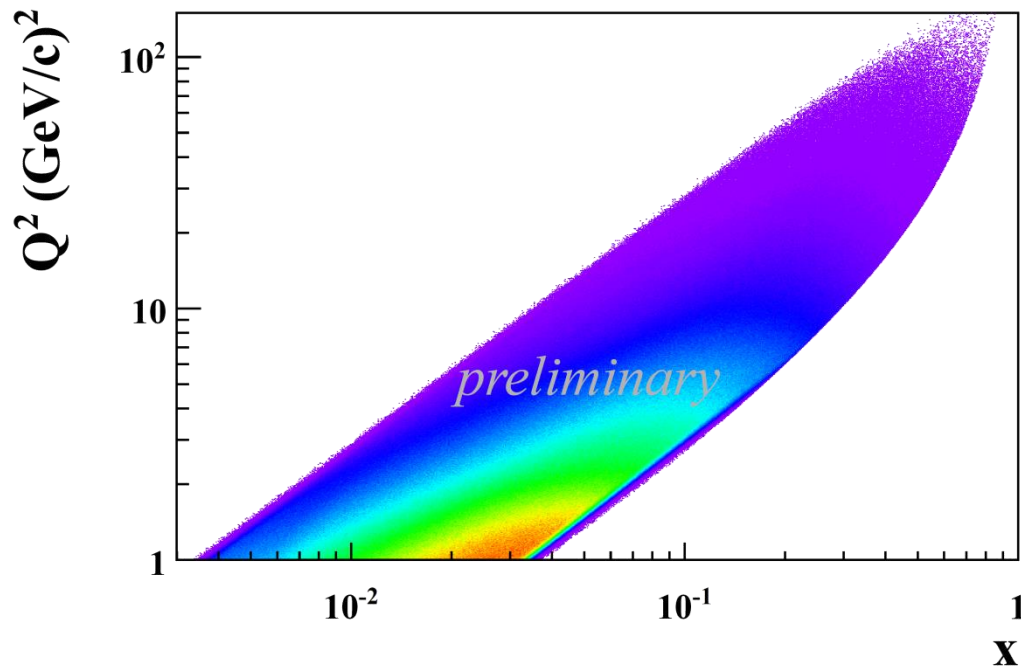
- Three cells system (30 cm, 60cm, 30cm)
- Polar angle acceptance – 180 mrad (new magnet in 2006)
- Target Polarization $\pm 90\%$
- dilution factor $f = 0.14$



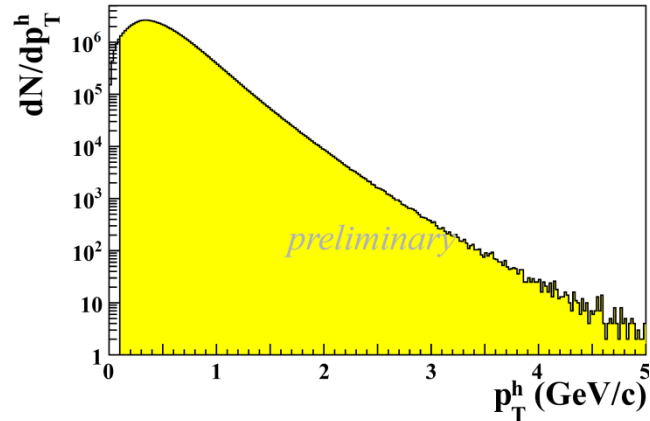
Data selection

- DIS cuts :
 - $Q^2 > 1 \text{ GeV}^2$
 - $0.1 < y < 0.9$
 - $W > 5 \text{ GeV}$
- Hadron cuts :
 - $z > 0.2$
 - $P_{hT} > 0.1 \text{ GeV}/c$

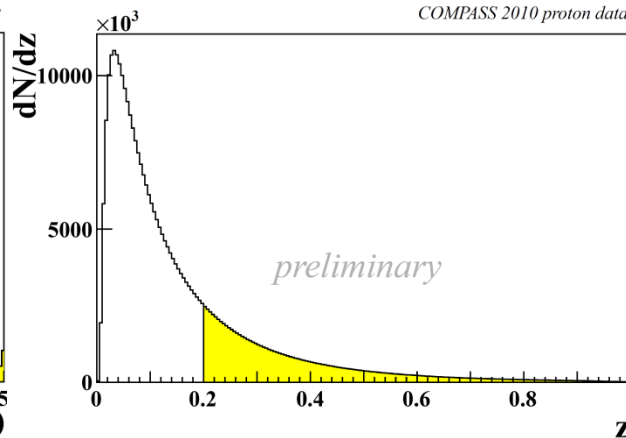
COMPASS 2010 proton data



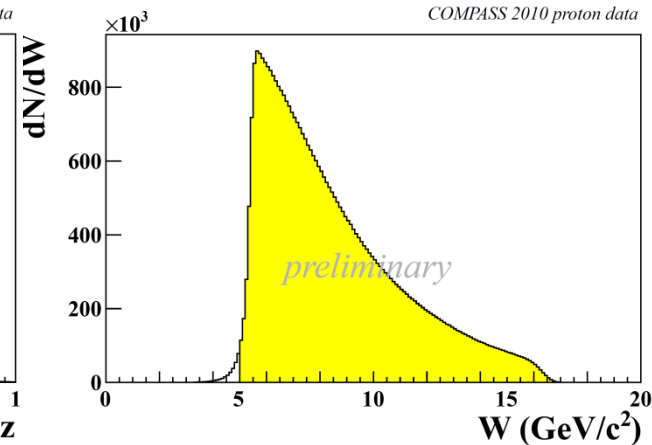
COMPASS 2010 proton data



COMPASS 2010 proton data



COMPASS 2010 proton data



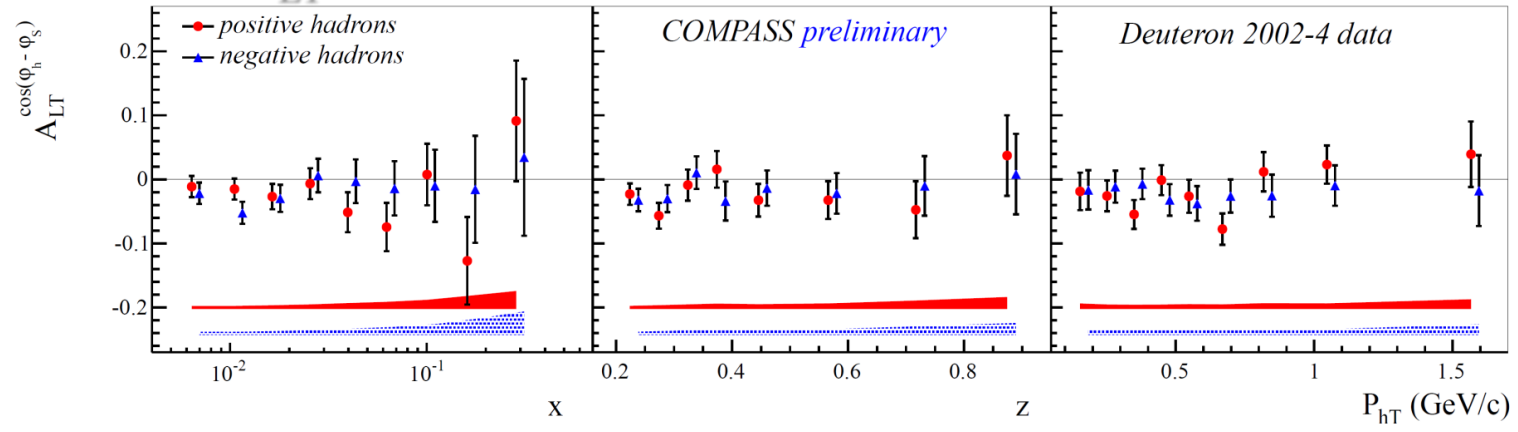


Outline

- Introduction
- COMPASS experiment
- **Measured asymmetries and theory expectations**
 - Re-evaluation of $A_{LT}^{\cos\phi_S}$ and $A_{LT}^{\cos(\phi_h - \phi_\psi)}$:
from the lp to γ^*p cross-section
 - Theory expectations
- Summary



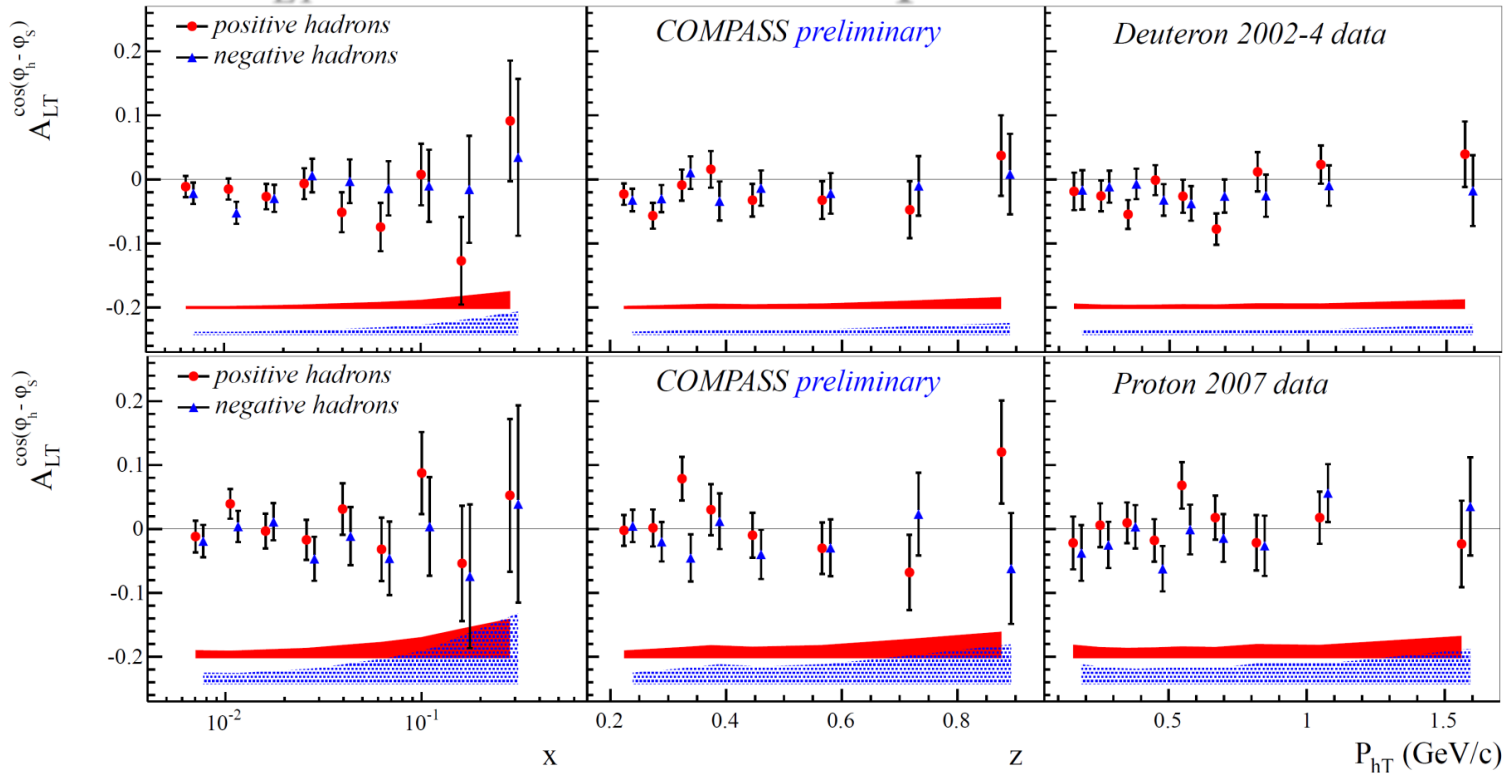
Results for $A_{LT}^{\cos(\phi_h - \phi_s)}$ deuteron



$A_{LT}^{\cos(\phi_h - \phi_s)} \propto g_{1T}^q \otimes D_{1q}^h$, "Worm Gear" PDF g_{1T}^q :

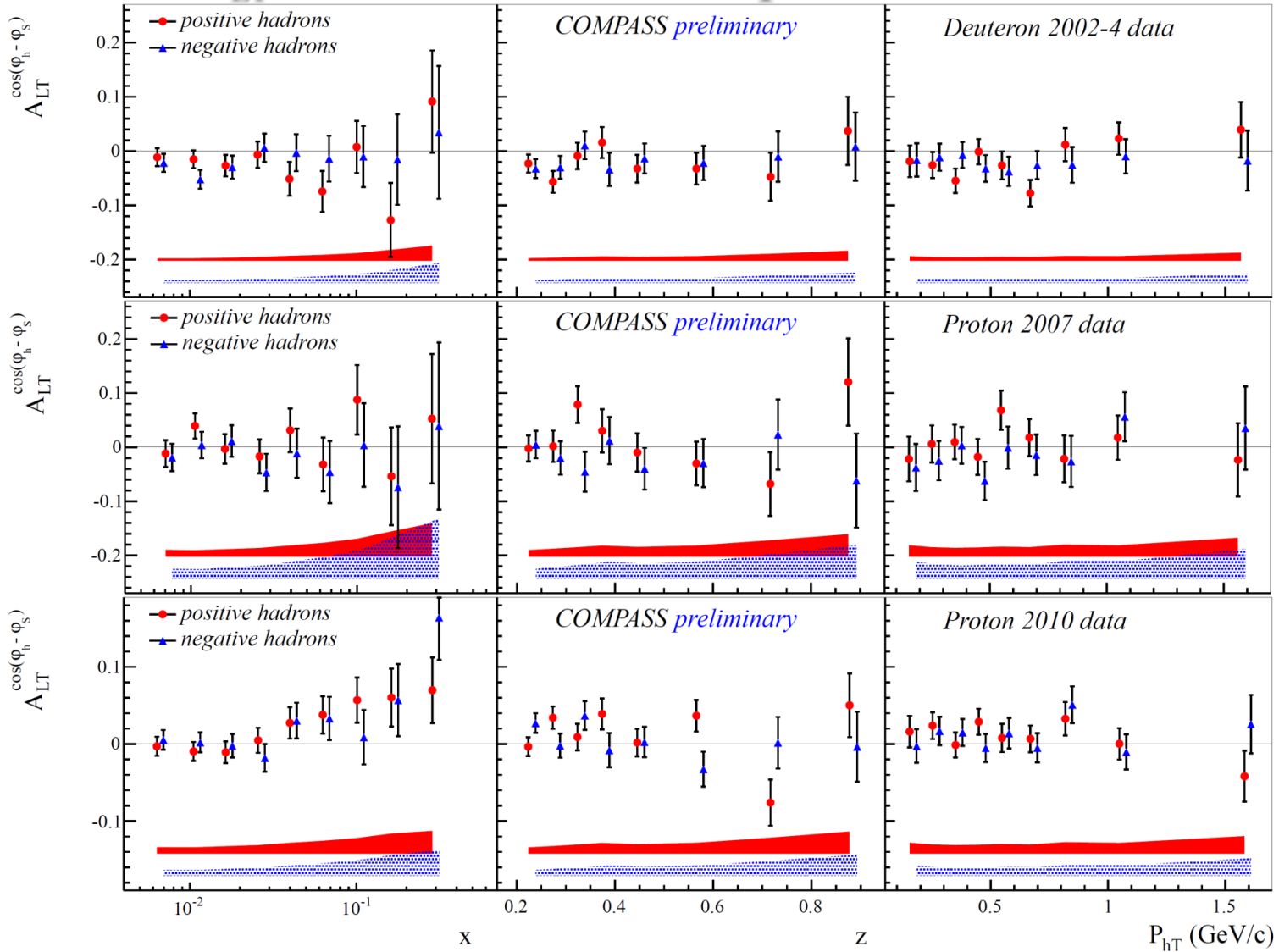


Results for $A_{LT}^{\cos(\phi_h - \phi_s)}$ deuteron & proton 2007



$A_{LT}^{\cos(\phi_h - \phi_s)} \propto g_{1T}^q \otimes D_{1q}^h$, "Worm Gear" PDF g_{1T}^q :

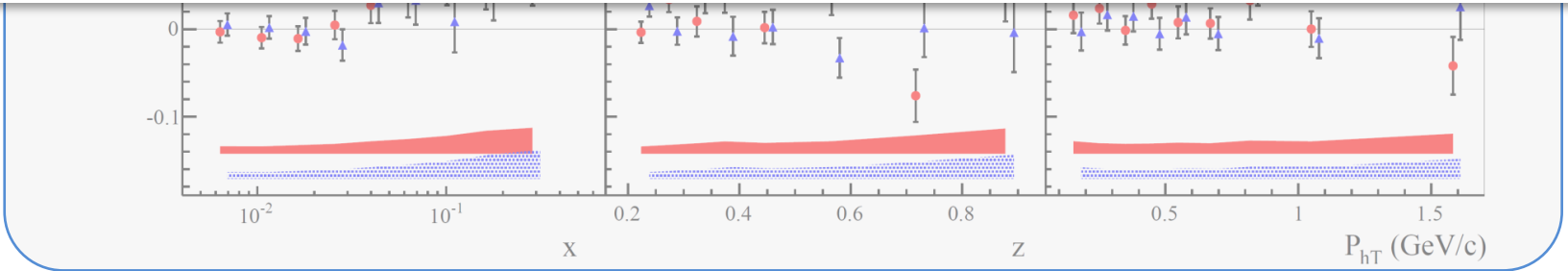
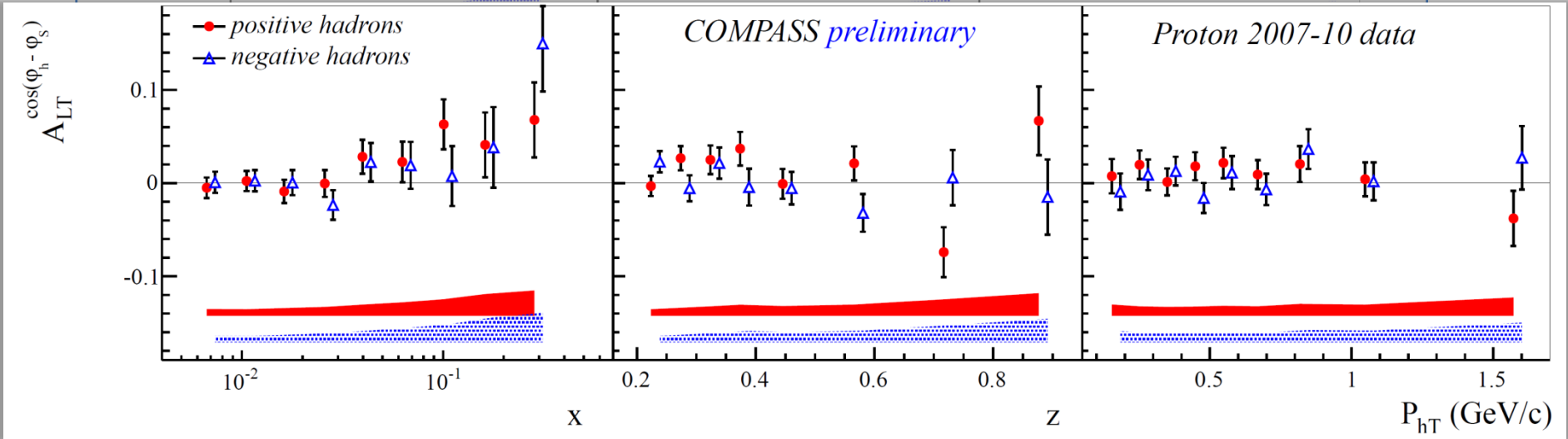
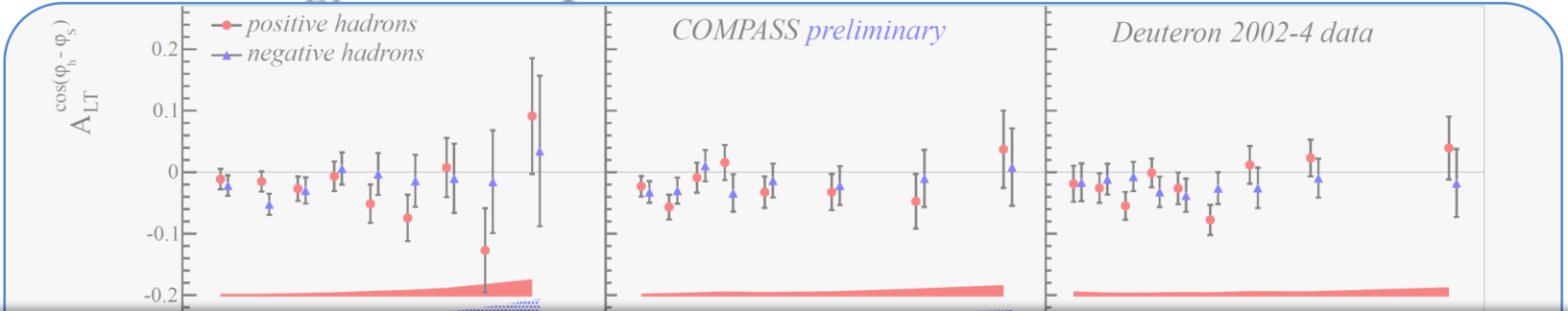
Results for $A_{LT}^{\cos(\phi_h - \phi_S)}$ deuteron & proton



$$A_{LT}^{\cos(\phi_h - \phi_S)} \propto g_{1T}^q \otimes D_{1q}^h, \text{ "Worm Gear" PDF } g_{1T}^q : \begin{array}{c} \circ \rightarrow \\ \leftarrow \circ \end{array}$$



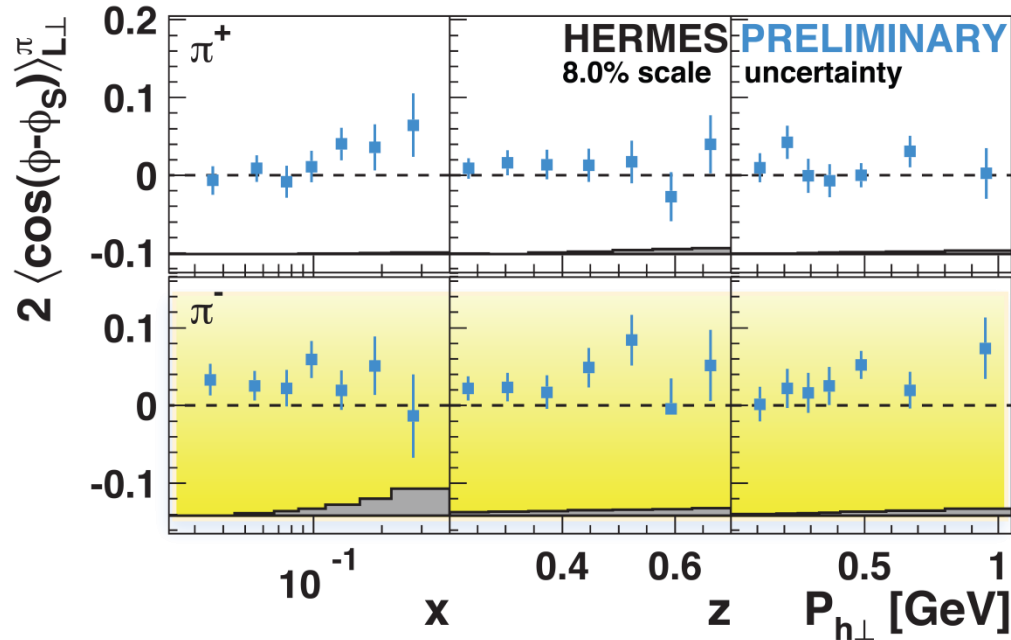
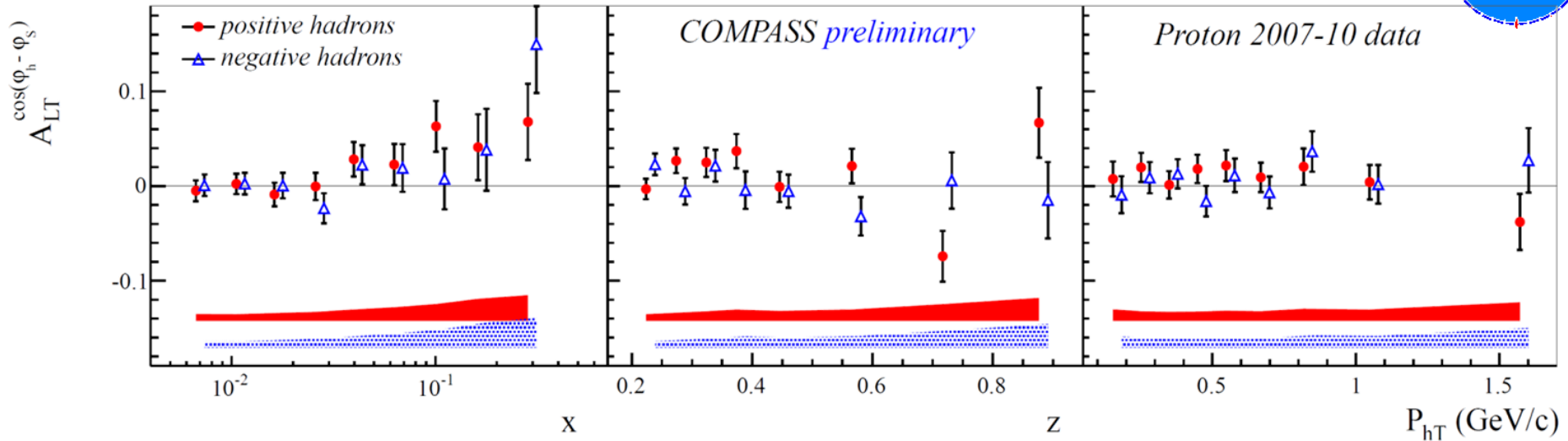
Results for $A_{LT}^{\cos(\phi_h - \phi_s)}$ proton 2007-2010



$A_{LT}^{\cos(\phi_h - \phi_s)} \propto g_{1T}^q \otimes D_{1q}^h$, "Worm Gear" PDF g_{1T}^q :



Results for $A_{LT}^{\cos(\phi_h - \phi_S)}$ COMPASS - HERMES

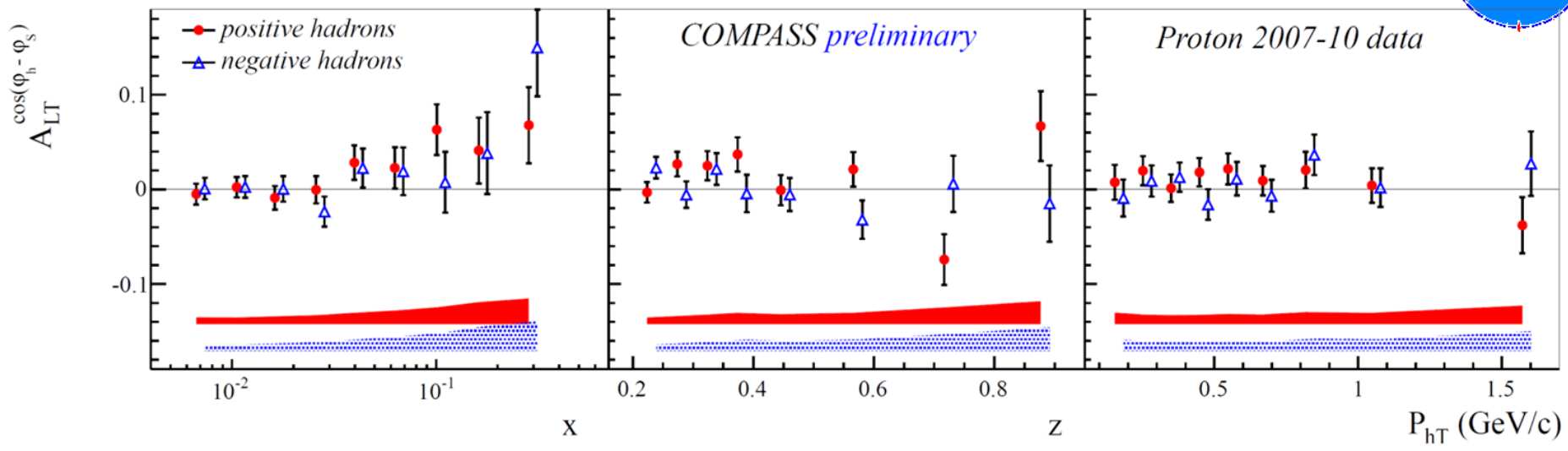


Similar trend for $A_{LT}^{\cos(\phi_h - \phi_S)}$ asymmetry is present in HERMES preliminary results.

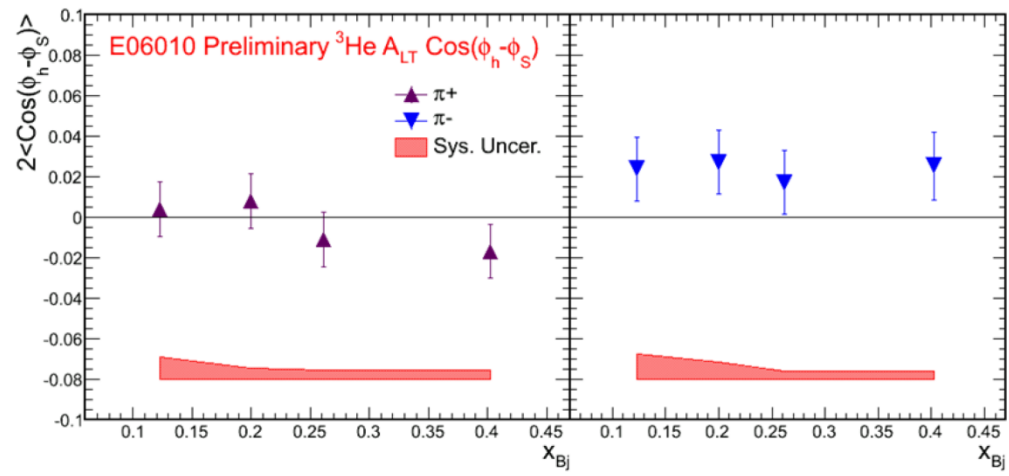
See next talk by L. Pappalardo



Results for $A_{LT}^{\cos(\phi_h - \phi_S)}$ COMPASS - JLab



^3He double-spin asymmetry A_{LT}



$$\propto \frac{g_{1T}^{\perp q}(x) \otimes D_{1q}^h(z)}{f_1^q(x) \otimes D_{1q}^h(z)}$$

- First observation of a non-zero A_{LT} .
- First measurement on neutron (^3He).
- Relate to quark TMD $g_{1T}(x, k_T)$.
- The real part of quark $L=0 \times L=1$ interference, "twin-brother" of Sivers.

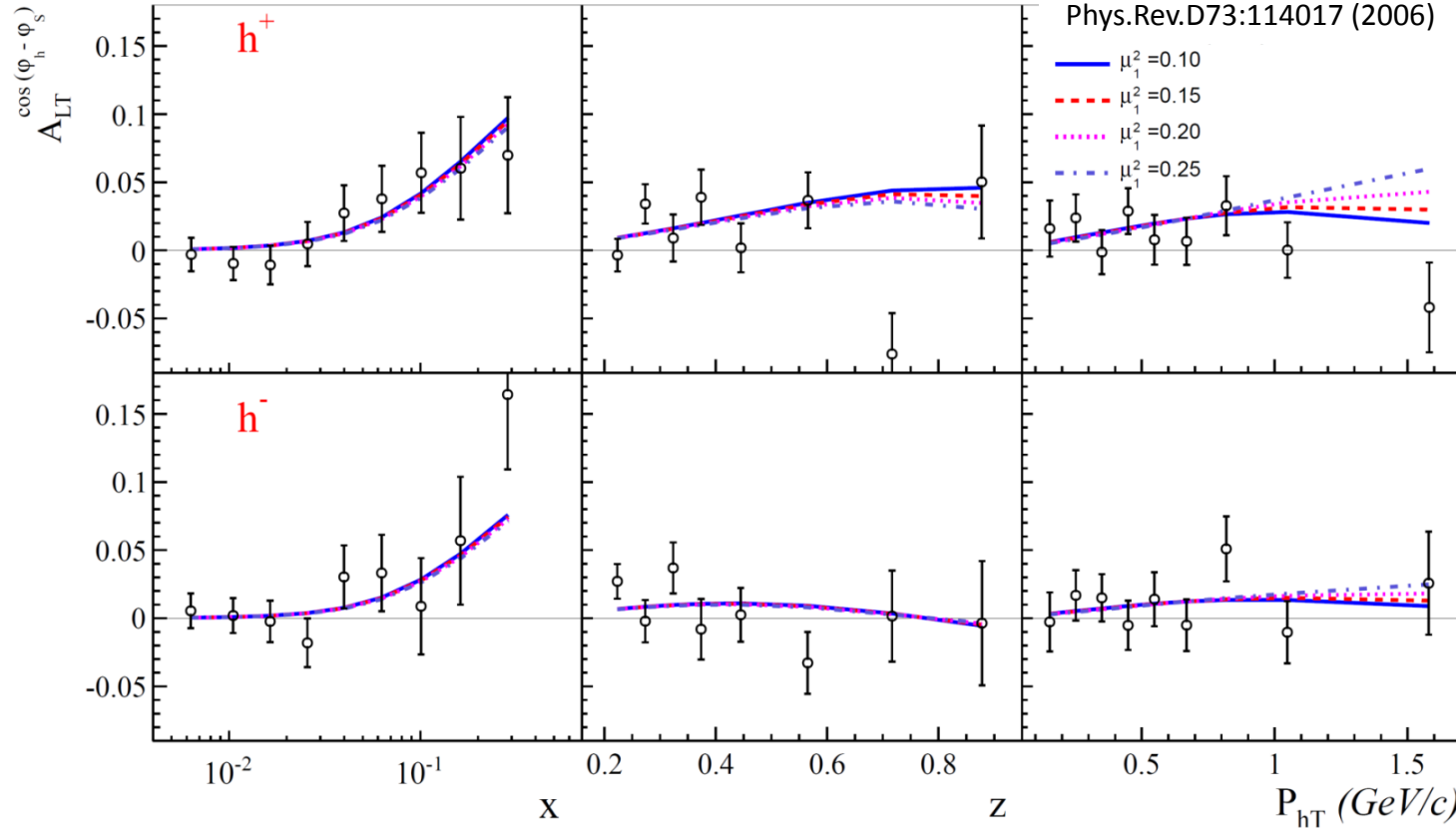
Ph.D. thesis of J. Huang (MIT 2011).



$A_{LT}^{\cos(\phi_h - \phi_s)}$ and predictions from PRD 73, 114017(2006)

COMPASS preliminary Proton 2010

A. Kotzinian, B. Parsamyan, A. Prokudin
Phys.Rev.D73:114017 (2006)



Calculations are done using:
for g_{1T} the model:

$$g_{1T}^{q(1)}(x, k_T^2) \approx x \int_x^1 dy \frac{g_1^q(y)}{y}$$

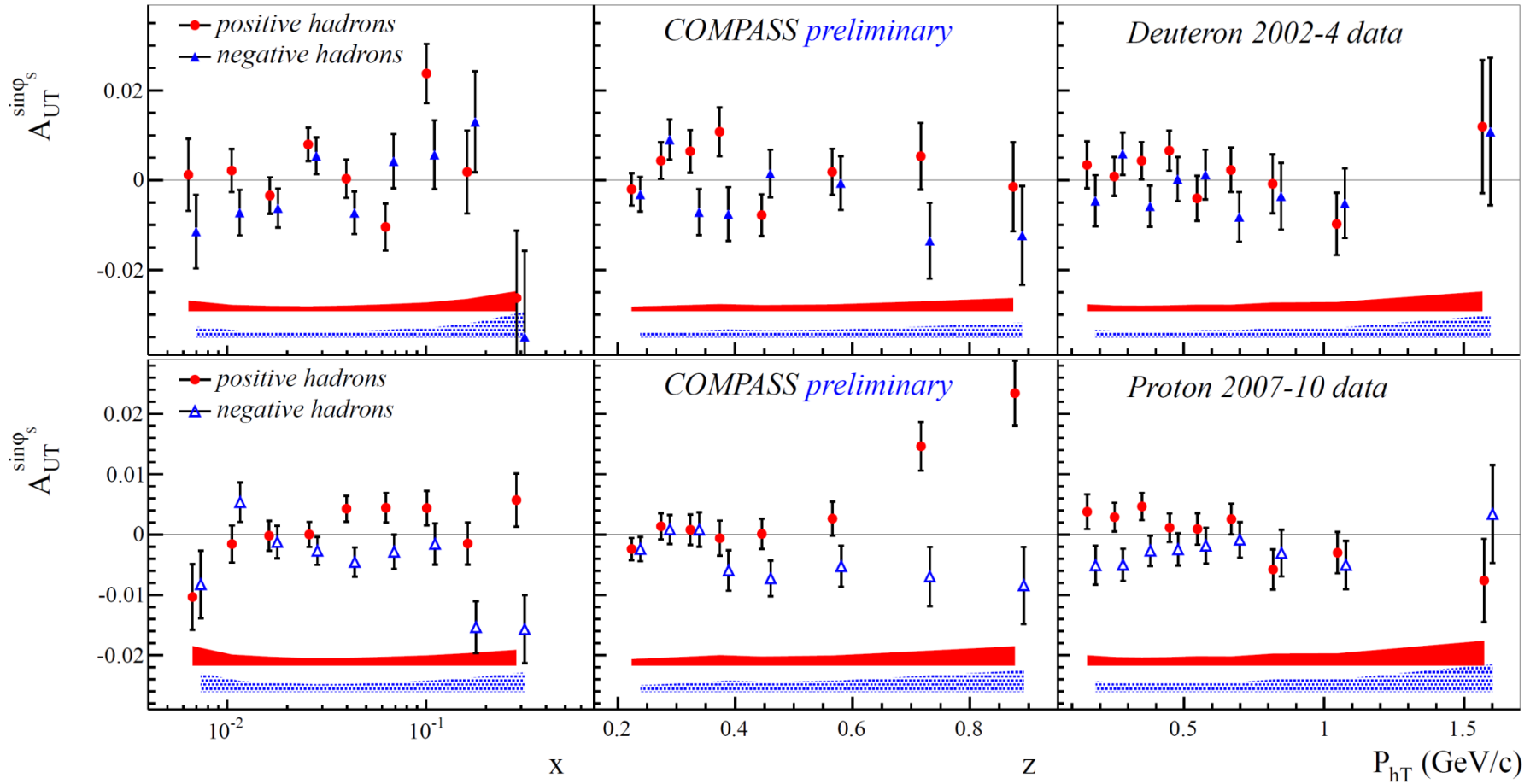
based on the Wandzura and Wilczek approximation;
Gaussian parameterization for k_T dependence;
LO GRV, GRSV2000 DFs and Kretzer FFs

Asymmetry is evaluated in COMPASS specific mean kinematic points extracted from the data. The predictions shows a good level of agreement with the experimentally extracted asymmetry

$$A_{LT}^{\cos(\phi_h - \phi_s)} \propto g_{1T}^q \otimes D_{1q}^h, \text{ "Worm Gear" PDF } g_{1T}^q : \text{---} \text{---} \text{---}$$



Results for $A_{UT}^{\sin\phi_s}$ on deuteron and proton



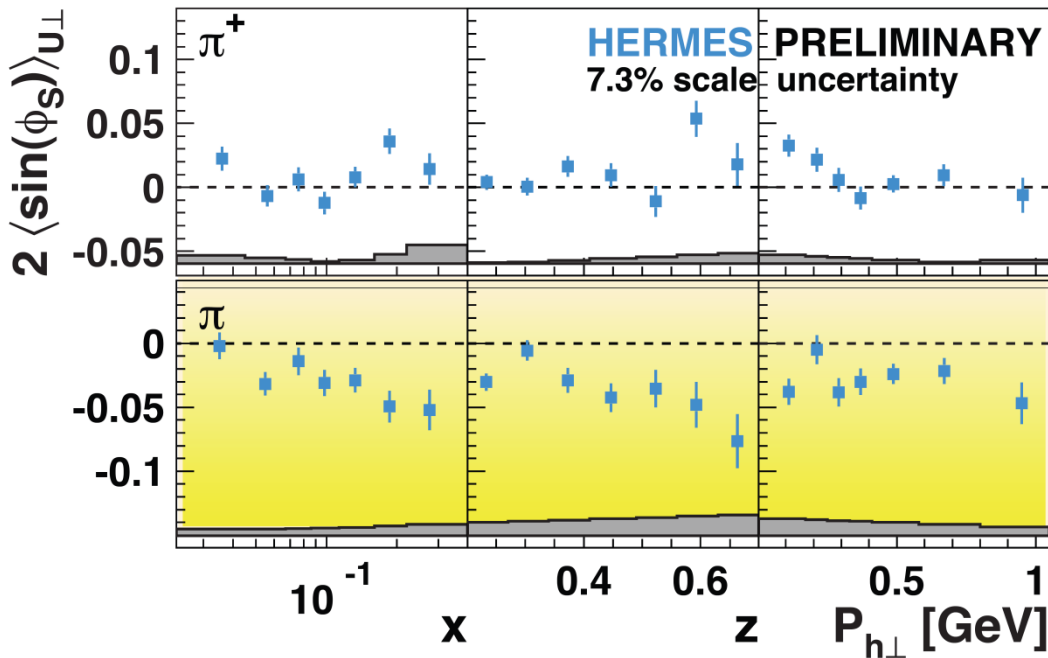
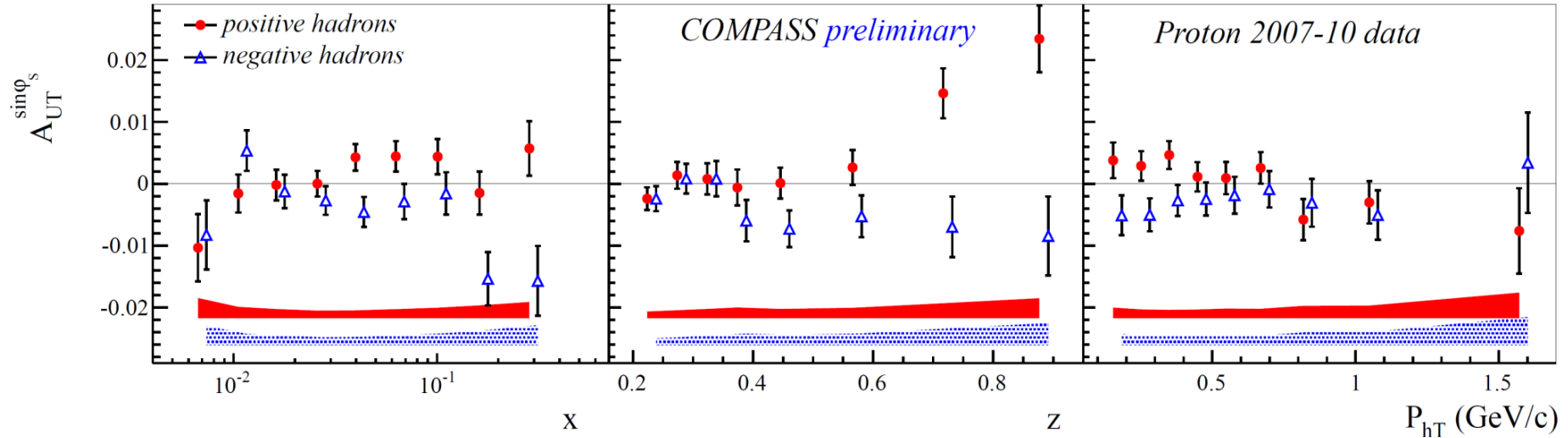
$$A_{UT}^{\sin\phi_s} \propto \frac{M}{Q} \left(h_1^q \otimes H_{1q}^{\perp h} + f_{1T}^{\perp q} \otimes D_{1q}^h + \dots \right),$$

"Transversity" PDF h_1^q :

"Sivers" PDF $f_{1T}^{\perp q}$:



Results for $A_{UT}^{\sin\phi_S}$ COMPASS - HERMES

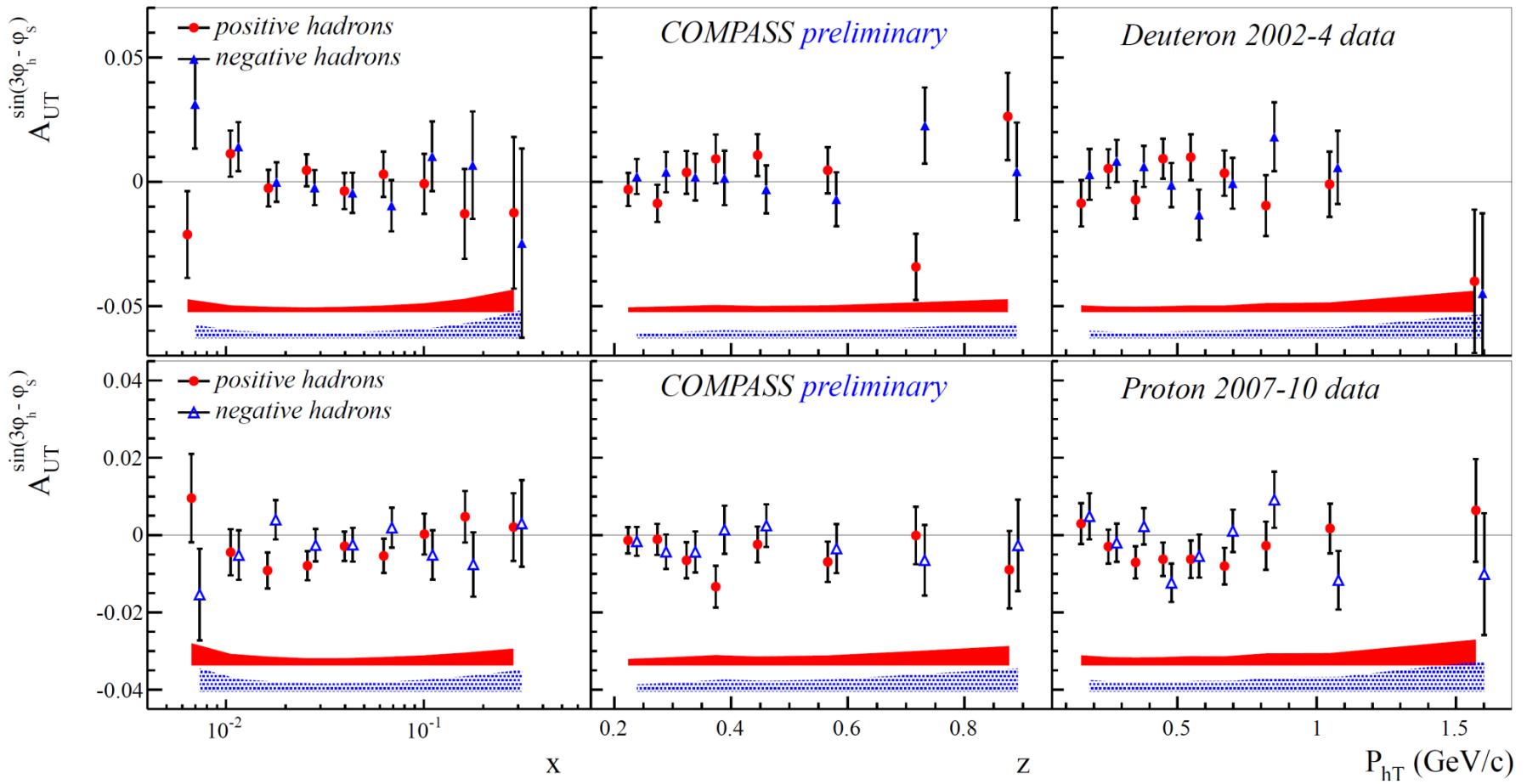


Signs of a non-zero $A_{UT}^{\sin\phi_S}$ asymmetry have been observed both by HERMES and COMPASS.

See next talk by L. Pappalardo



Results for $A_{UT}^{\sin(3\phi_h - \phi_s)}$ deuteron & proton

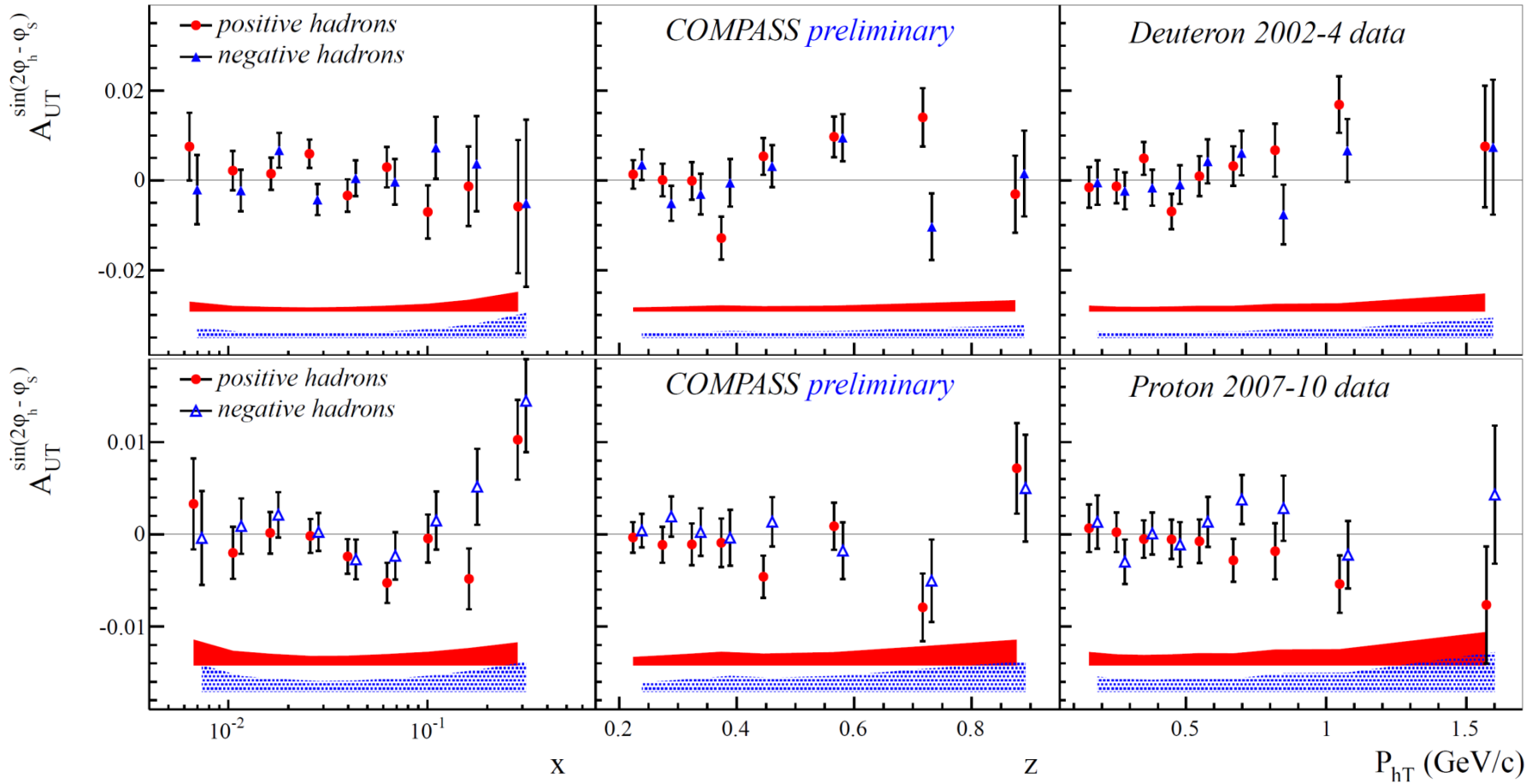


$A_{UT}^{\sin(3\phi_h - \phi_s)} \propto h_{1T}^{\perp q} \otimes H_{1q}^{\perp h}$, "Pretzelosity" PDF $h_{1T}^{\perp q}$:

Expected to be suppressed by a factor of $\sim |\mathbf{P}_{hT}|^2$ with respect to the Collins and Sivers amplitudes
 Asymmetries for both proton and deuteron are compatible with zero within uncertainties



Results for $A_{UT}^{\sin(2\phi_h - \phi_s)}$ deuteron & proton



$$A_{UT}^{\sin(2\phi_h - \phi_s)} \propto \frac{M}{Q} \left(h_{1T}^{\perp q} \otimes H_{1q}^{\perp h} + f_{1T}^{\perp q} \otimes D_{1q}^h + \dots \right),$$

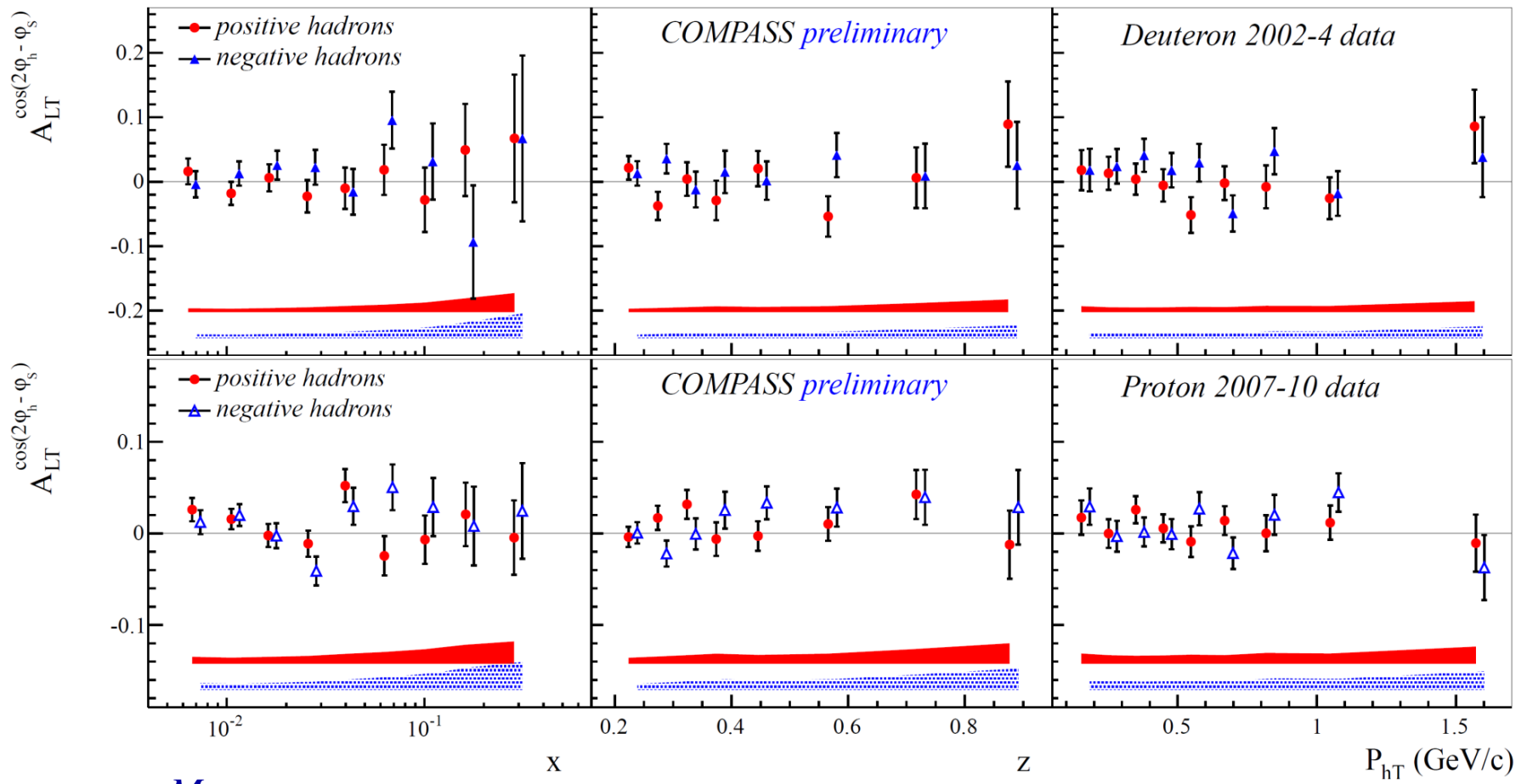
"Pretzelosity" PDF $h_{1T}^{\perp q}$:

"Sivers" PDF $f_{1T}^{\perp q}$:

At low $|\mathbf{P}_{hT}|$ expected to be suppressed by a factor of $\sim |\mathbf{P}_{hT}|$ with respect to the Collins and Sivers Asymmetries for both proton and deuteron are compatible with zero within uncertainties



Results for $A_{LT}^{\cos(2\phi_h - \phi_s)}$ deuteron & proton



$$A_{LT}^{\cos(2\phi_h - \phi_s)} \propto \frac{M}{Q} \left(g_{1T}^q \otimes D_{1q}^h + \dots \right), \text{ "Worm Gear" PDF } g_{1T}^q : \text{---} \text{---} \text{---} \text{---} \text{---} \text{---}$$

At low $|\mathbf{P}_{hT}|$ expected to be suppressed by a factor of $\sim |\mathbf{P}_{hT}|$ with respect to the Collins and Sivers Asymmetries for both proton and deuteron are compatible with zero within uncertainties



Outline

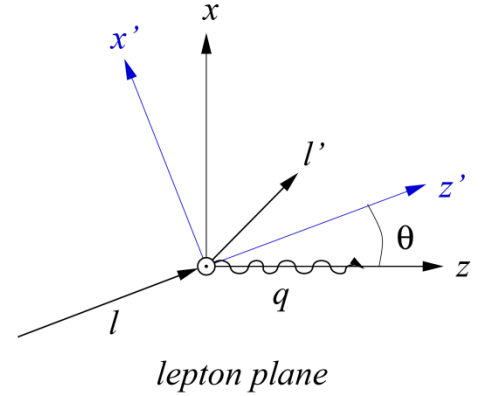
- Introduction
- COMPASS experiment
- **Measured asymmetries and theory expectations**
 - Re-evaluation of $A_{LT}^{\cos\varphi_S}$ and $A_{LT}^{\cos(\varphi_h - \varphi_S)}$:
from the lp to γ^*p cross-section
 - Theory expectations
- Summary

SIDIS x-section: from lp to γ^*p ($P_L=0$)

Kotzinian et al.
 hep-ph/9808368 (1998)
 hep-ph/9908466 (1999)
 M. Diehl and S. Sapeta,
 Eur. Phys. J. C 41 (2005) 515

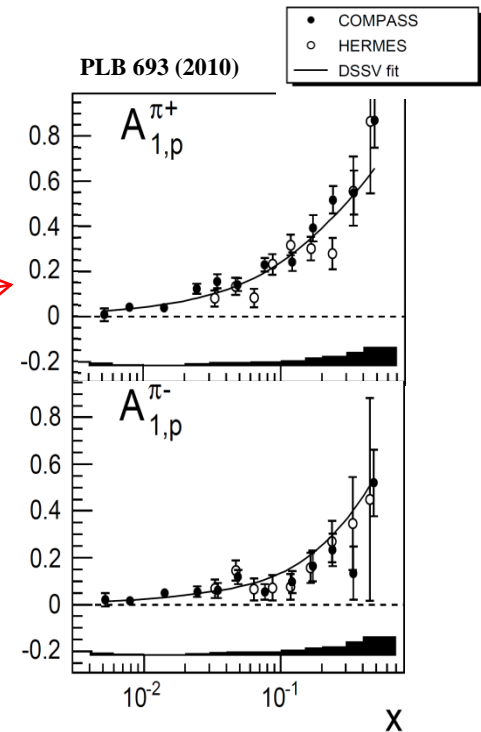


$$\frac{d\sigma}{dx dy dz dP_{hT}^2 d\varphi_h d\varphi_S} = \left[\frac{\cos\theta}{1 - \sin^2\theta \sin^2\varphi_S} \right] \times \left[\frac{\alpha}{xyQ^2} \frac{y^2}{2(1-\varepsilon)} \left(1 + \frac{\gamma^2}{2x} \right) \right] \times (F_{UU,T} + \varepsilon F_{UU,L}) \times$$



$$\frac{P_T}{\sqrt{1 - \sin^2\theta \sin^2\varphi_S}} \left[\begin{aligned} & 1 + \cos\varphi_h \times \sqrt{2\varepsilon(1+\varepsilon)} A_{UU}^{\cos\varphi_h} + \cos(2\varphi_h) \times \varepsilon A_{UU}^{\cos(2\varphi_h)} + \lambda \sin\varphi_h \times \sqrt{2\varepsilon(1-\varepsilon)} A_{LU}^{\sin\varphi_h} + \\ & \sin\varphi_S \times \left(\cos\theta \sqrt{2\varepsilon(1+\varepsilon)} A_{UT}^{\sin\varphi_S} \right) + \\ & \sin(\varphi_h - \varphi_S) \times \left(\cos\theta A_{UT}^{\sin(\varphi_h - \varphi_S)} + \frac{1}{2} \sin\theta \sqrt{2\varepsilon(1+\varepsilon)} A_{UL}^{\sin\varphi_h} \right) + \\ & \sin(\varphi_h + \varphi_S) \times \left(\cos\theta \varepsilon A_{UT}^{\sin(\varphi_h + \varphi_S)} + \frac{1}{2} \sin\theta \sqrt{2\varepsilon(1+\varepsilon)} A_{UL}^{\sin\varphi_h} \right) + \\ & \sin(2\varphi_h - \varphi_S) \times \left(\cos\theta \sqrt{2\varepsilon(1+\varepsilon)} A_{UT}^{\sin(2\varphi_h - \varphi_S)} + \frac{1}{2} \sin\theta \varepsilon A_{UL}^{\sin 2\varphi_h} \right) + \\ & \sin(3\varphi_h - \varphi_S) \times \left(\cos\theta \varepsilon A_{UT}^{\sin(3\varphi_h - \varphi_S)} \right) + \\ & \sin(2\varphi_h + \varphi_S) \times \left(\frac{1}{2} \sin\theta \varepsilon A_{UL}^{\sin 2\varphi_h} \right) \end{aligned} \right] +$$

$$\frac{P_T \lambda}{\sqrt{1 - \sin^2\theta \sin^2\varphi_S}} \left[\begin{aligned} & \cos\varphi_S \times \left(\cos\theta \sqrt{2\varepsilon(1-\varepsilon)} A_{LT}^{\cos\varphi_S} + \sin\theta \sqrt{(1-\varepsilon^2)} A_{LL} \right) + \\ & \cos(\varphi_h - \varphi_S) \times \left(\cos\theta \sqrt{(1-\varepsilon^2)} A_{LT}^{\cos(\varphi_h - \varphi_S)} + \frac{1}{2} \sin\theta \sqrt{2\varepsilon(1-\varepsilon)} A_{LL}^{\cos\varphi_h} \right) + \\ & \cos(2\varphi_h - \varphi_S) \times \left(\cos\theta \sqrt{2\varepsilon(1-\varepsilon)} A_{LT}^{\cos(2\varphi_h - \varphi_S)} \right) + \\ & \cos(\varphi_h + \varphi_S) \times \left(\frac{1}{2} \sin\theta \sqrt{2\varepsilon(1-\varepsilon)} A_{LL}^{\cos\varphi_h} \right) \end{aligned} \right]$$

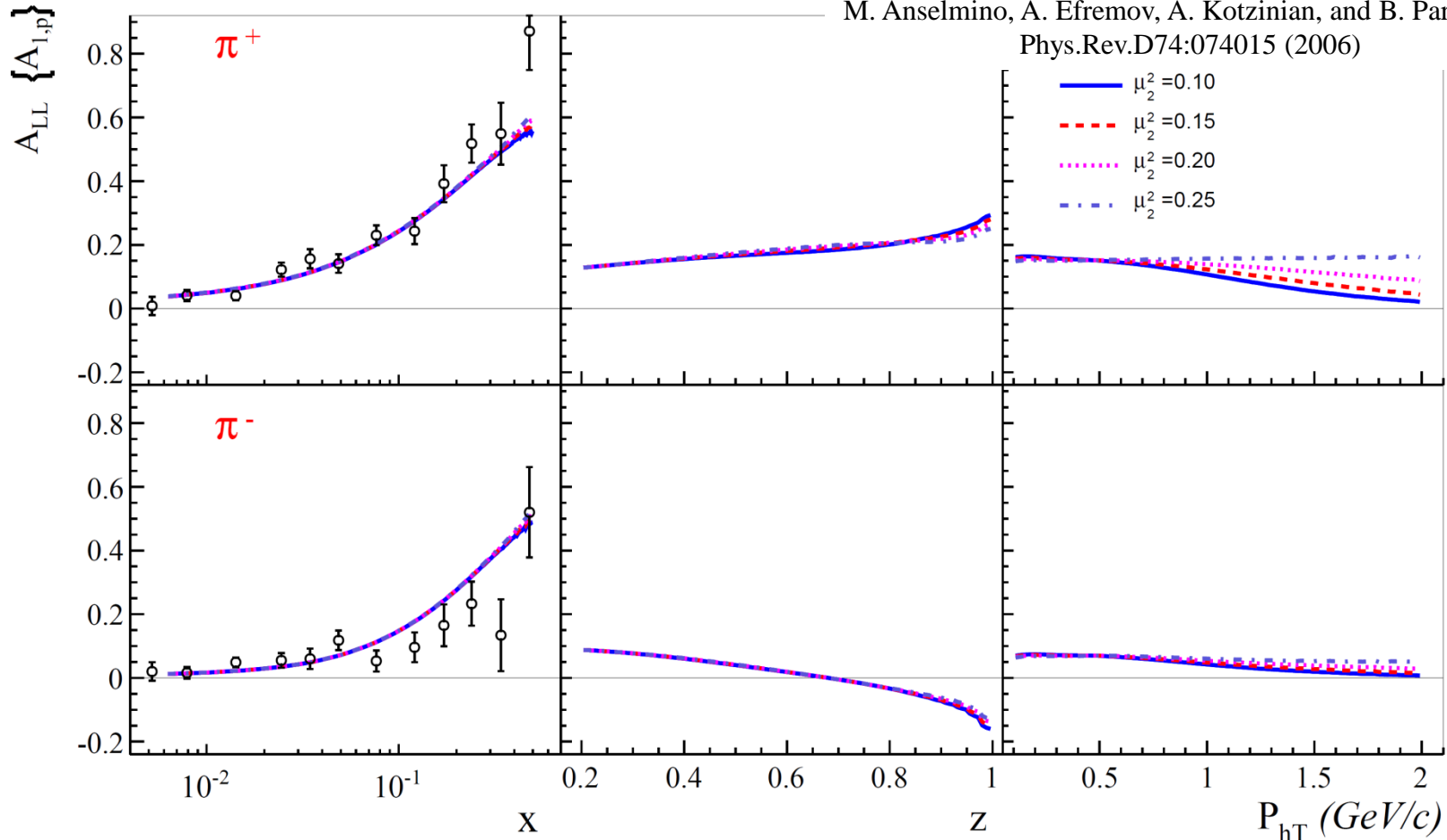




A_{LL} evaluated according to the PRD 74, 074015 (2006)

COMPASS Proton 2007 (PLB 693(2010))

M. Anselmino, A. Efremov, A. Kotzinian, and B. Parsamyan
Phys.Rev.D74:074015 (2006)



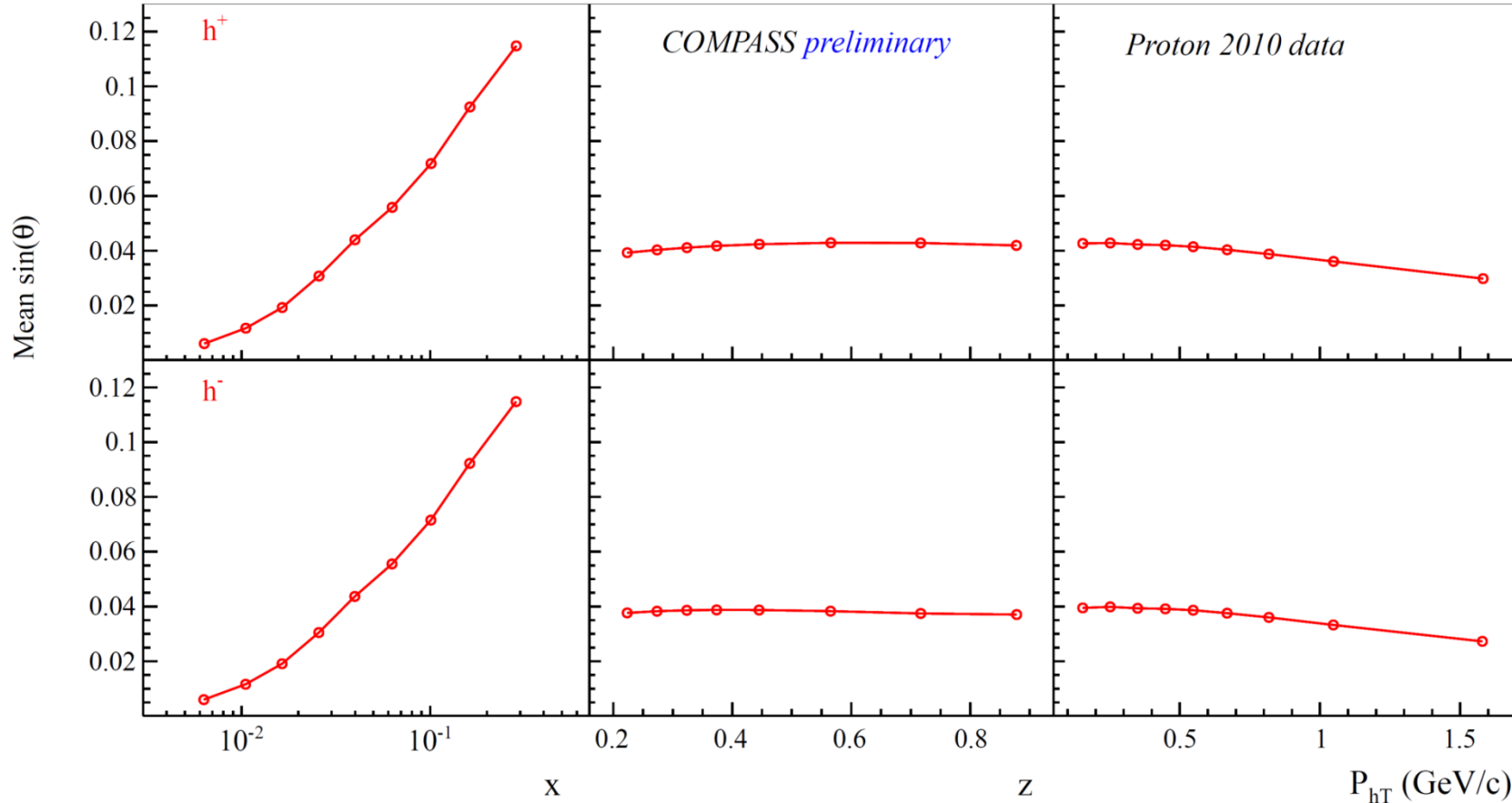
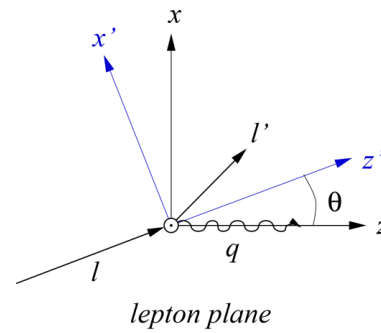
Asymmetry is evaluated in COMPASS specific mean kinematic points extracted from the data.
Good level of agreement up to $x \approx 0.3$, which allows us to use the predicted z and P_{hT} – dependencies in $A_{LT}^{\cos(\varphi_s)}$ -correction.



Mean $\sin\theta$ -values

$$\sin\theta = \gamma \sqrt{\frac{1 - y - \frac{1}{4}\gamma^2 y^2}{1 + \gamma^2}}, \quad \gamma = \frac{2Mx}{Q};$$

$\theta \xrightarrow{\text{Bjorken limit}} 0 \Rightarrow S_T \approx P_T, S_L \approx P_L$



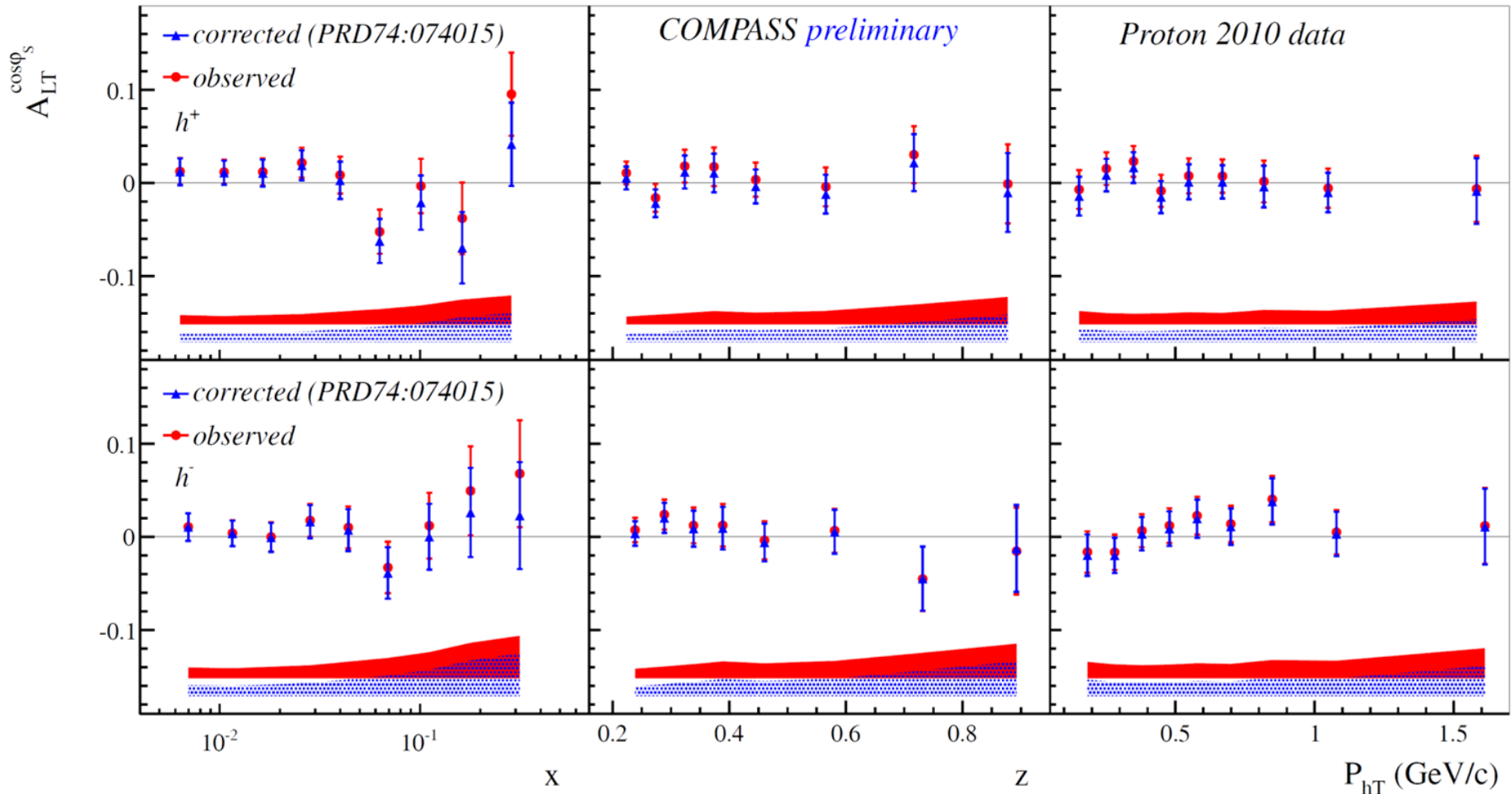
The $\sin\theta$ is small at COMPASS kinematics. The maximum reached value is ~ 0.12 and the mean is around 0.04 ($\cos\theta \approx 1$).



$A_{LT}^{\cos\varphi_S}$ corrected for A_{LL} -contribution

using A_{LL} from PRD 74, 074015(2006)

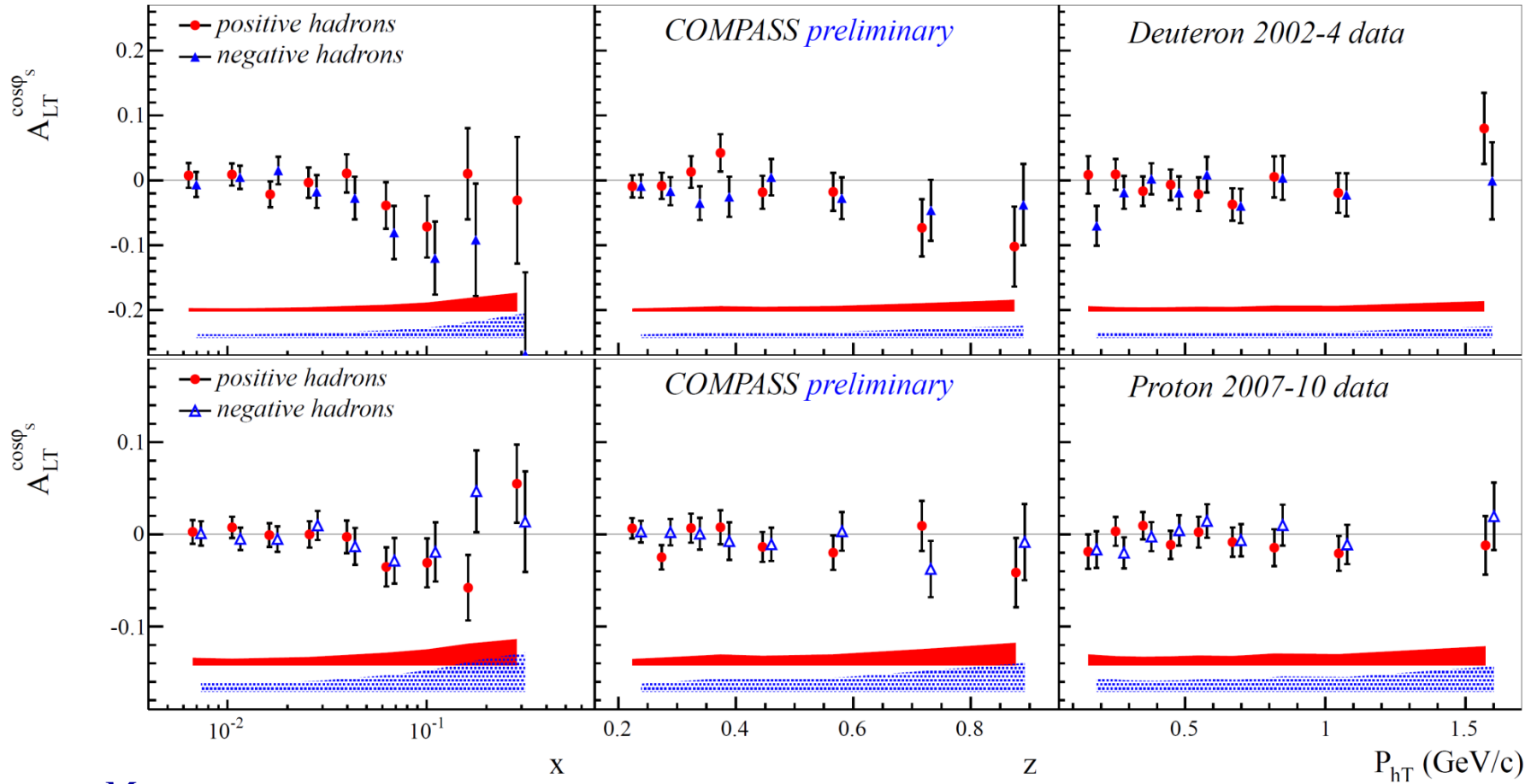
$$A_{LT}^{\cos\varphi_S'} \approx \left(\cos\theta A_{LT}^{\cos\varphi_S} - \sin\theta \frac{\sqrt{(1-\varepsilon^2)}}{\sqrt{2\varepsilon(1-\varepsilon)}} A_{LL} \right)$$



As expected, at large x the corrections become sizable.



Results for $A_{LT}^{\cos\phi_s}$ deuteron & proton



$$A_{LT}^{\cos\phi_s} \propto \frac{M}{Q} \left(g_{1T}^q \otimes D_{1q}^h + \dots \right), \quad \text{"Worm Gear" PDF } g_{1T}^q : \left[\begin{array}{c} \odot \rightarrow \\ \leftarrow \odot \end{array} \right]$$

Asymmetries for both proton and deuteron are compatible with zero within uncertainties

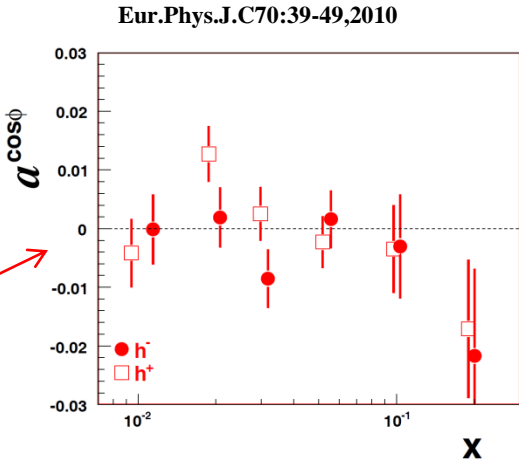
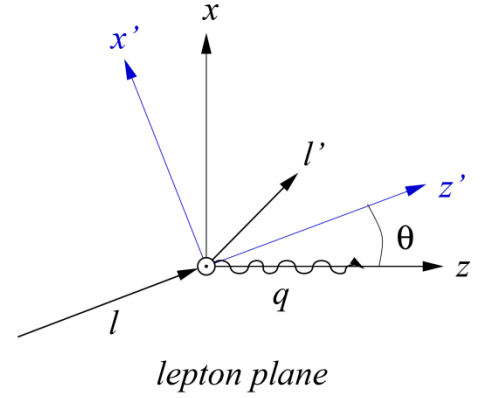
SIDIS x-section: from lp to γ^*p ($P_L=0$)

Kotzinian et al.
 hep-ph/9808368 (1998)
 hep-ph/9908466 (1999)
 M. Diehl and S. Sapeta,
 Eur. Phys. J. C 41 (2005) 515



$$\frac{d\sigma}{dx dy dz dP_{hT}^2 d\varphi_h d\varphi_S} = \left[\frac{\cos\theta}{1 - \sin^2\theta \sin^2\varphi_S} \right] \times \left[\frac{\alpha}{xyQ^2} \frac{y^2}{2(1-\varepsilon)} \left(1 + \frac{\gamma^2}{2x} \right) \right] \times (F_{UU,T} + \varepsilon F_{UU,L}) \times$$

$$\left[\begin{aligned} & 1 + \cos\varphi_h \times \sqrt{2\varepsilon(1+\varepsilon)} A_{UU}^{\cos\varphi_h} + \cos(2\varphi_h) \times \varepsilon A_{UU}^{\cos(2\varphi_h)} + \lambda \sin\varphi_h \times \sqrt{2\varepsilon(1-\varepsilon)} A_{LU}^{\sin\varphi_h} + \\ & \left[\begin{aligned} & \sin\varphi_S \times \left(\cos\theta \sqrt{2\varepsilon(1+\varepsilon)} A_{UT}^{\sin\varphi_S} \right) + \\ & \sin(\varphi_h - \varphi_S) \times \left(\cos\theta A_{UT}^{\sin(\varphi_h - \varphi_S)} + \frac{1}{2} \sin\theta \sqrt{2\varepsilon(1+\varepsilon)} A_{UL}^{\sin\varphi_h} \right) + \\ & \sin(\varphi_h + \varphi_S) \times \left(\cos\theta \varepsilon A_{UT}^{\sin(\varphi_h + \varphi_S)} + \frac{1}{2} \sin\theta \sqrt{2\varepsilon(1+\varepsilon)} A_{UL}^{\sin\varphi_h} \right) + \\ & \sin(2\varphi_h - \varphi_S) \times \left(\cos\theta \sqrt{2\varepsilon(1+\varepsilon)} A_{UT}^{\sin(2\varphi_h - \varphi_S)} + \frac{1}{2} \sin\theta \varepsilon A_{UL}^{\sin 2\varphi_h} \right) + \\ & \sin(3\varphi_h - \varphi_S) \times \left(\cos\theta \varepsilon A_{UT}^{\sin(3\varphi_h - \varphi_S)} \right) + \\ & \sin(2\varphi_h + \varphi_S) \times \left(\frac{1}{2} \sin\theta \varepsilon A_{UL}^{\sin 2\varphi_h} \right) \end{aligned} \right] + \\ & \left[\begin{aligned} & \cos\varphi_S \times \left(\cos\theta \sqrt{2\varepsilon(1-\varepsilon)} A_{LT}^{\cos\varphi_S} + \sin\theta \sqrt{(1-\varepsilon^2)} A_{LL} \right) + \\ & \cos(\varphi_h - \varphi_S) \times \left(\cos\theta \sqrt{(1-\varepsilon^2)} A_{LT}^{\cos(\varphi_h - \varphi_S)} + \frac{1}{2} \sin\theta \sqrt{2\varepsilon(1-\varepsilon)} A_{LL}^{\cos\varphi_h} \right) + \\ & \cos(2\varphi_h - \varphi_S) \times \left(\cos\theta \sqrt{2\varepsilon(1-\varepsilon)} A_{LT}^{\cos(2\varphi_h - \varphi_S)} \right) + \\ & \cos(\varphi_h + \varphi_S) \times \left(\frac{1}{2} \sin\theta \sqrt{2\varepsilon(1-\varepsilon)} A_{LL}^{\cos\varphi_h} \right) \end{aligned} \right] \end{aligned} \right] \times \frac{P_T}{\sqrt{1 - \sin^2\theta \sin^2\varphi_S}}$$



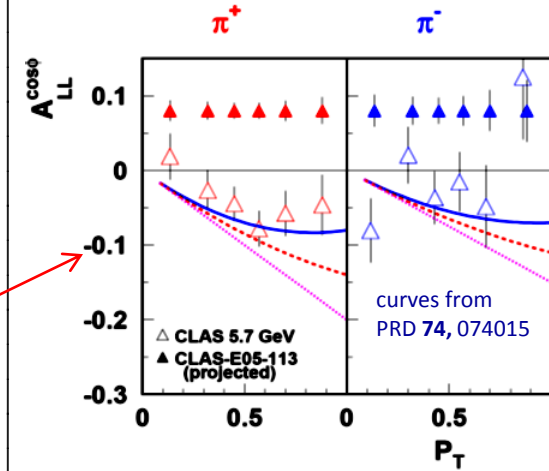
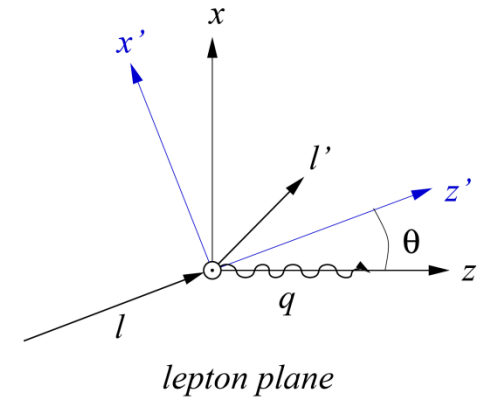
SIDIS x-section: from lp to γ^*p ($P_L=0$)

Kotzinian et al.
 hep-ph/9808368 (1998)
 hep-ph/9908466 (1999)
 M. Diehl and S. Sapeta,
 Eur. Phys. J. C 41 (2005) 515



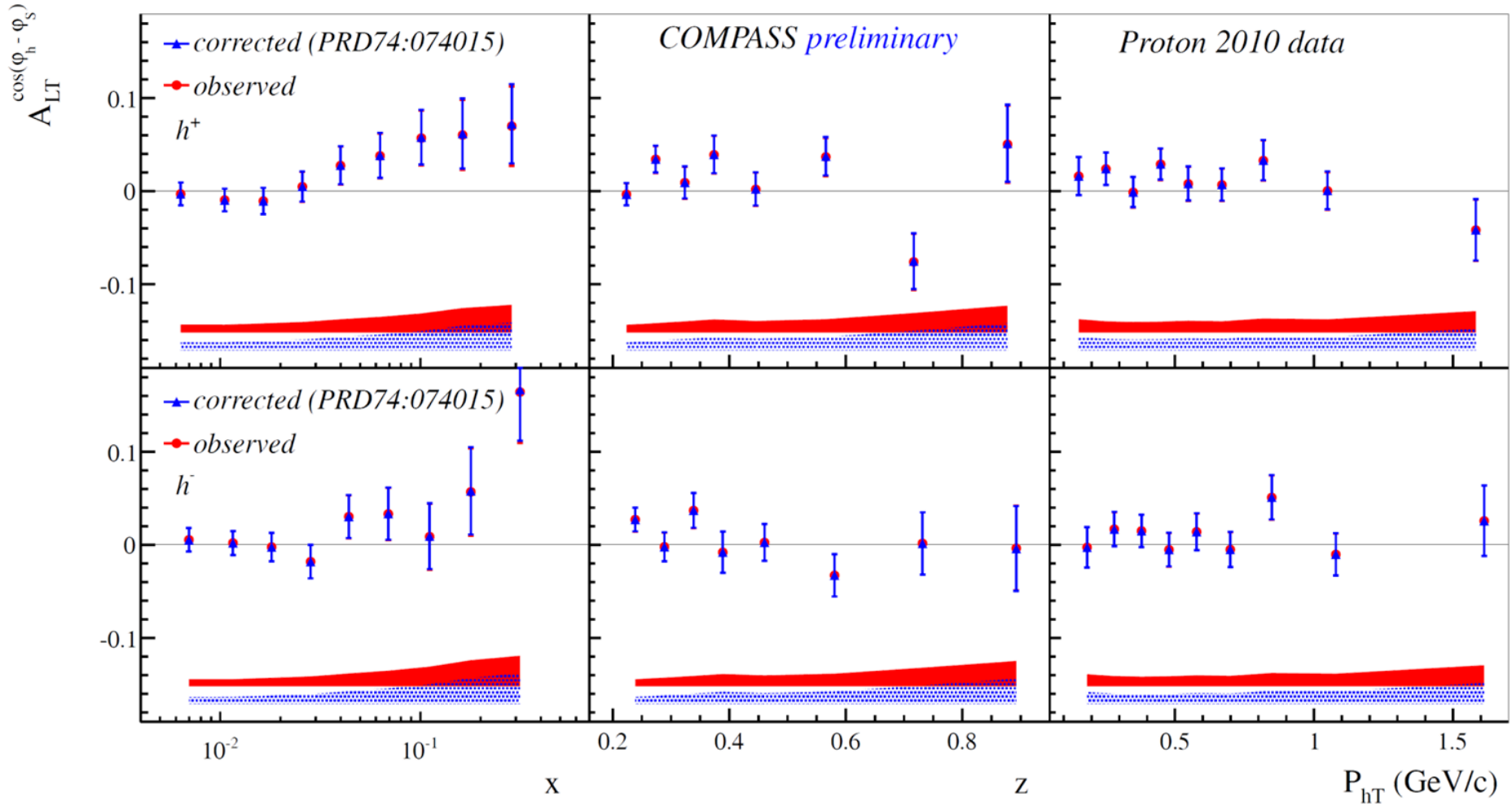
$$\frac{d\sigma}{dx dy dz dP_{hT}^2 d\varphi_h d\varphi_S} = \left[\frac{\cos\theta}{1 - \sin^2\theta \sin^2\varphi_S} \right] \times \left[\frac{\alpha}{xyQ^2} \frac{y^2}{2(1-\varepsilon)} \left(1 + \frac{\gamma^2}{2x} \right) \right] \times (F_{UU,T} + \varepsilon F_{UU,L}) \times$$

$$\begin{aligned} & 1 + \cos\varphi_h \times \sqrt{2\varepsilon(1+\varepsilon)} A_{UU}^{\cos\varphi_h} + \cos(2\varphi_h) \times \varepsilon A_{UU}^{\cos(2\varphi_h)} + \lambda \sin\varphi_h \times \sqrt{2\varepsilon(1-\varepsilon)} A_{LU}^{\sin\varphi_h} + \\ & \left[\frac{P_T}{\sqrt{1 - \sin^2\theta \sin^2\varphi_S}} \right] \times \left[\begin{aligned} & \sin\varphi_S \times \left(\cos\theta \sqrt{2\varepsilon(1+\varepsilon)} A_{UT}^{\sin\varphi_S} \right) + \\ & \sin(\varphi_h - \varphi_S) \times \left(\cos\theta A_{UT}^{\sin(\varphi_h - \varphi_S)} + \frac{1}{2} \sin\theta \sqrt{2\varepsilon(1+\varepsilon)} A_{UL}^{\sin\varphi_h} \right) + \\ & \sin(\varphi_h + \varphi_S) \times \left(\cos\theta \varepsilon A_{UT}^{\sin(\varphi_h + \varphi_S)} + \frac{1}{2} \sin\theta \sqrt{2\varepsilon(1+\varepsilon)} A_{UL}^{\sin\varphi_h} \right) + \\ & \sin(2\varphi_h - \varphi_S) \times \left(\cos\theta \sqrt{2\varepsilon(1+\varepsilon)} A_{UT}^{\sin(2\varphi_h - \varphi_S)} + \frac{1}{2} \sin\theta \varepsilon A_{UL}^{\sin 2\varphi_h} \right) + \\ & \sin(3\varphi_h - \varphi_S) \times \left(\cos\theta \varepsilon A_{UT}^{\sin(3\varphi_h - \varphi_S)} \right) + \\ & \sin(2\varphi_h + \varphi_S) \times \left(\frac{1}{2} \sin\theta \varepsilon A_{UL}^{\sin 2\varphi_h} \right) \end{aligned} \right] + \\ & \left[\frac{P_T \lambda}{\sqrt{1 - \sin^2\theta \sin^2\varphi_S}} \right] \times \left[\begin{aligned} & \cos\varphi_S \times \left(\cos\theta \sqrt{2\varepsilon(1-\varepsilon)} A_{LT}^{\cos\varphi_S} + \sin\theta \sqrt{(1-\varepsilon^2)} A_{LL} \right) + \\ & \cos(\varphi_h - \varphi_S) \times \left(\cos\theta \sqrt{(1-\varepsilon^2)} A_{LT}^{\cos(\varphi_h - \varphi_S)} + \frac{1}{2} \sin\theta \sqrt{2\varepsilon(1-\varepsilon)} A_{LL}^{\cos\varphi_h} \right) + \\ & \cos(2\varphi_h - \varphi_S) \times \left(\cos\theta \sqrt{2\varepsilon(1-\varepsilon)} A_{LT}^{\cos(2\varphi_h - \varphi_S)} \right) + \\ & \cos(\varphi_h + \varphi_S) \times \left(\frac{1}{2} \sin\theta \sqrt{2\varepsilon(1-\varepsilon)} A_{LL}^{\cos\varphi_h} \right) \end{aligned} \right] \end{aligned}$$



$A_{LT}^{\cos(\varphi_h - \varphi_s)}$ corrected for $A_{LL}^{\cos\varphi_h}$ -contribution

using $A_{LL}^{\cos\varphi_h}$ from PRD 74, 074015(2006)



$A_{LL}^{\cos\varphi_h}$ contribution to the $A_{LT}^{\cos(\varphi_s - \varphi_h)}$ is negligible



Outline

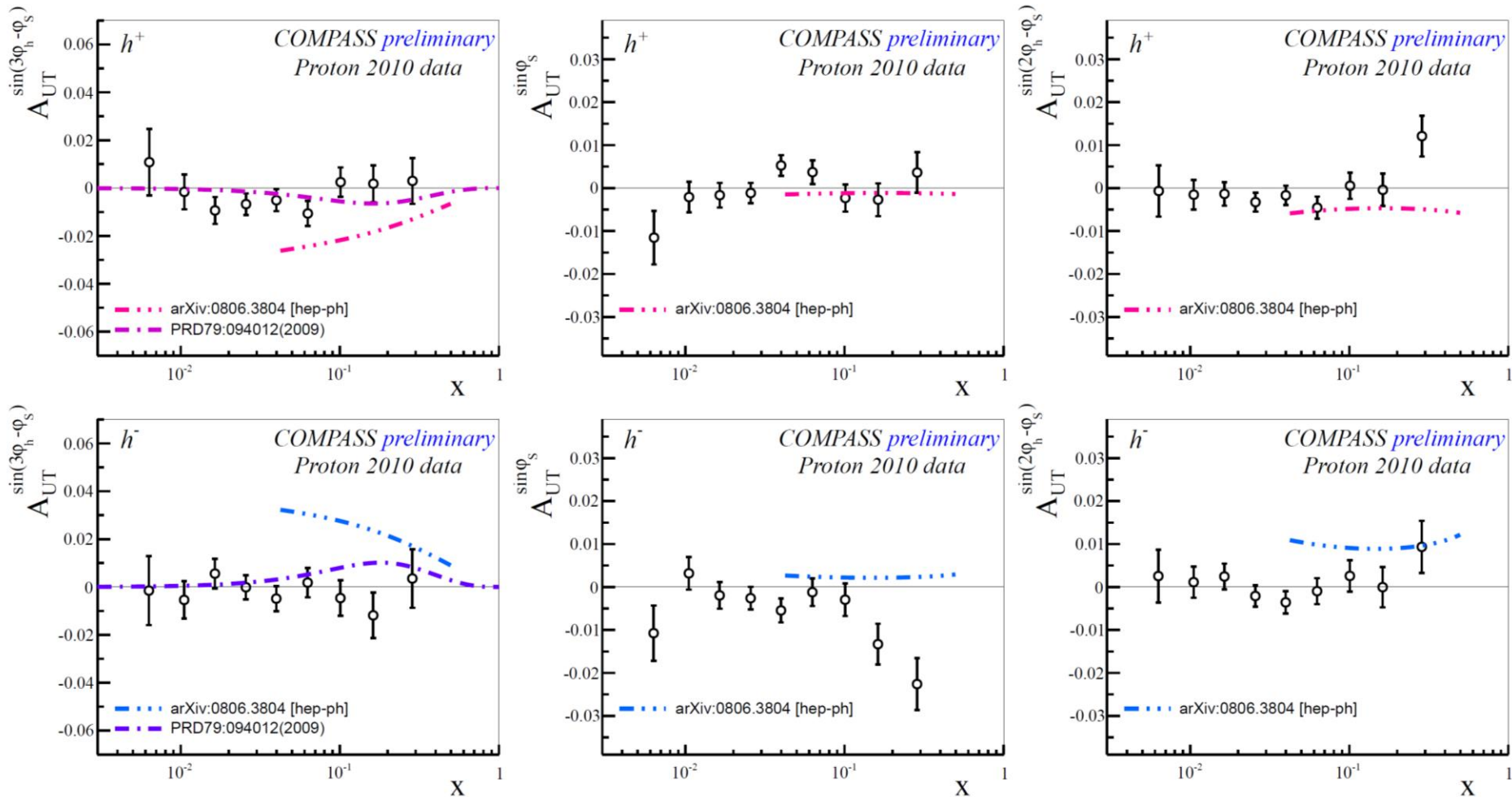
- Introduction
- COMPASS experiment
- **Measured asymmetries and theory expectations**
 - Re-evaluation of $A_{LT}^{\cos\phi_S}$ and $A_{LT}^{\cos(\phi_h - \phi_\psi)}$:
from the lp to γ^*p cross-section
 - **Theory expectations**
- Summary

“UT” asymmetries and theoretical predictions x-dependence only



S. Boffi, A.V. Efremov, B. Pasquini and P. Schweitzer PRD79:094012(2009)

A. Kotzinian arXiv:0806.3804[hep-ph]

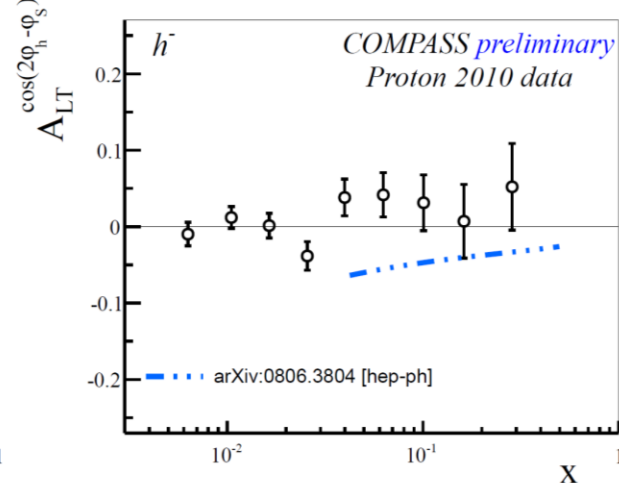
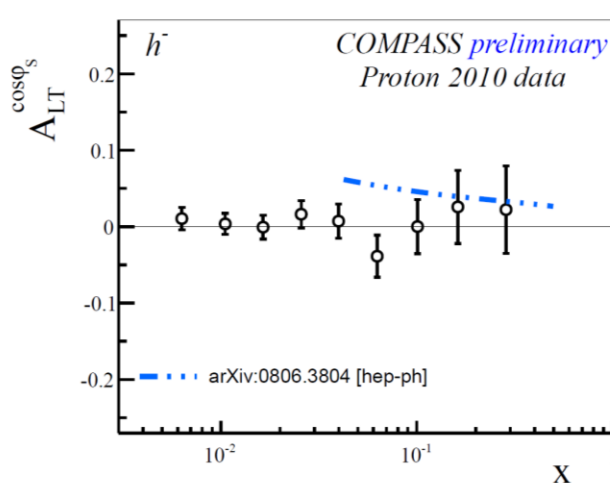
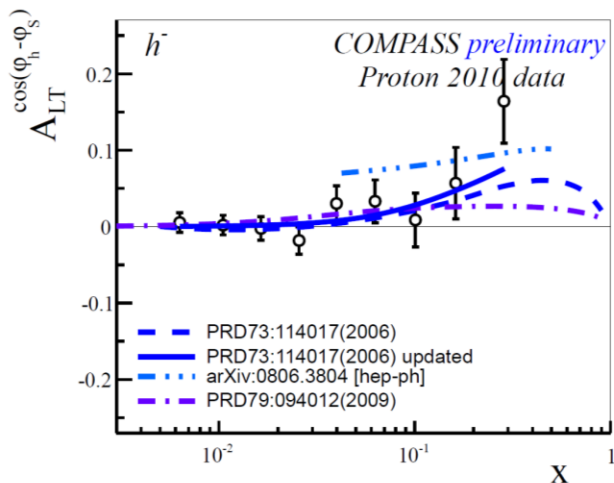
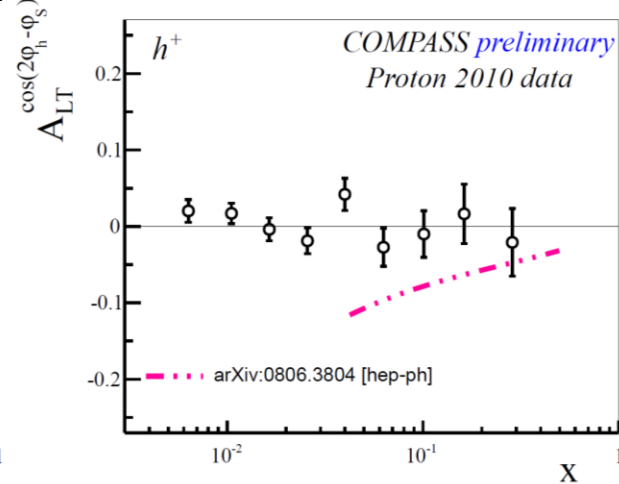
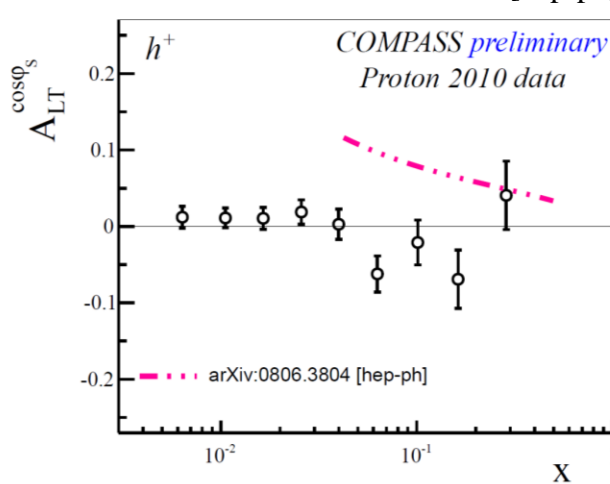
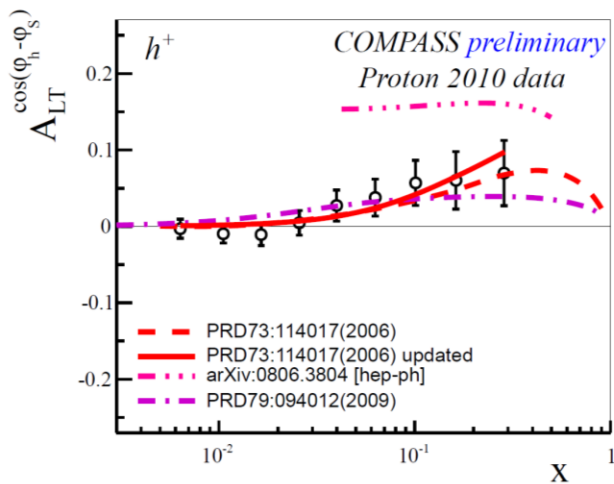


“LT” asymmetries and theoretical predictions



x-dependence only

A. Kotzinian, B. Parsamyan, A. Prokudin Phys.Rev.D73:114017 (2006)
 S. Boffi, A.V. Efremov, B. Pasquini and P. Schweitzer PRD79:094012(2009)
 A. Kotzinian arXiv:0806.3804[hep-ph]



The predictions for $A_{LT}^{\cos(\varphi_h - \varphi_S)}$ shows a good level of agreement with the experimentally extracted asymmetry.



Outline

- Introduction
- COMPASS experiment
- Measured asymmetries and theory expectations
 - Re-evaluation of $A_{LT}^{\cos\varphi_S}$ and $A_{LT}^{\cos(\varphi_h - \varphi_\psi)}$:
from the lp to γ^*p cross-section
 - Theory expectations
- **Summary**



Summary

- Six “beyond Collins and Sivers” transverse spin asymmetries

$$A_{UT}^{\sin(3\varphi_h-\varphi_s)}, A_{UT}^{\sin\varphi_s}, A_{UT}^{\sin(3\varphi_h-\varphi_s)}, A_{LT}^{\cos(\varphi_h-\varphi_s)}, A_{LT}^{\cos\varphi_s} \text{ \& } A_{LT}^{\cos(2\varphi_h-\varphi_s)}$$

have been extracted from COMPASS deuteron 2002-2004, proton 2007 and now also proton 2010 data.

- “Deuteron” and “proton 2007” asymmetries found to be consistent with zero within the statistical accuracy of the measurement.
- Higher statistics and improved quality of the 2010 proton data allowed to reveal a non-zero trend for the $A_{LT}^{\cos(\varphi_h-\varphi_s)}$ and $A_{UT}^{\sin\varphi_s}$ amplitudes.
- Observed effects confirm HERMES preliminary results.
- COMPASS results for the $A_{LT}^{\cos(\varphi_h-\varphi_s)}$ showed a good level of agreement with the theoretical predictions.
- Next → Six asymmetries for pions and kaons.

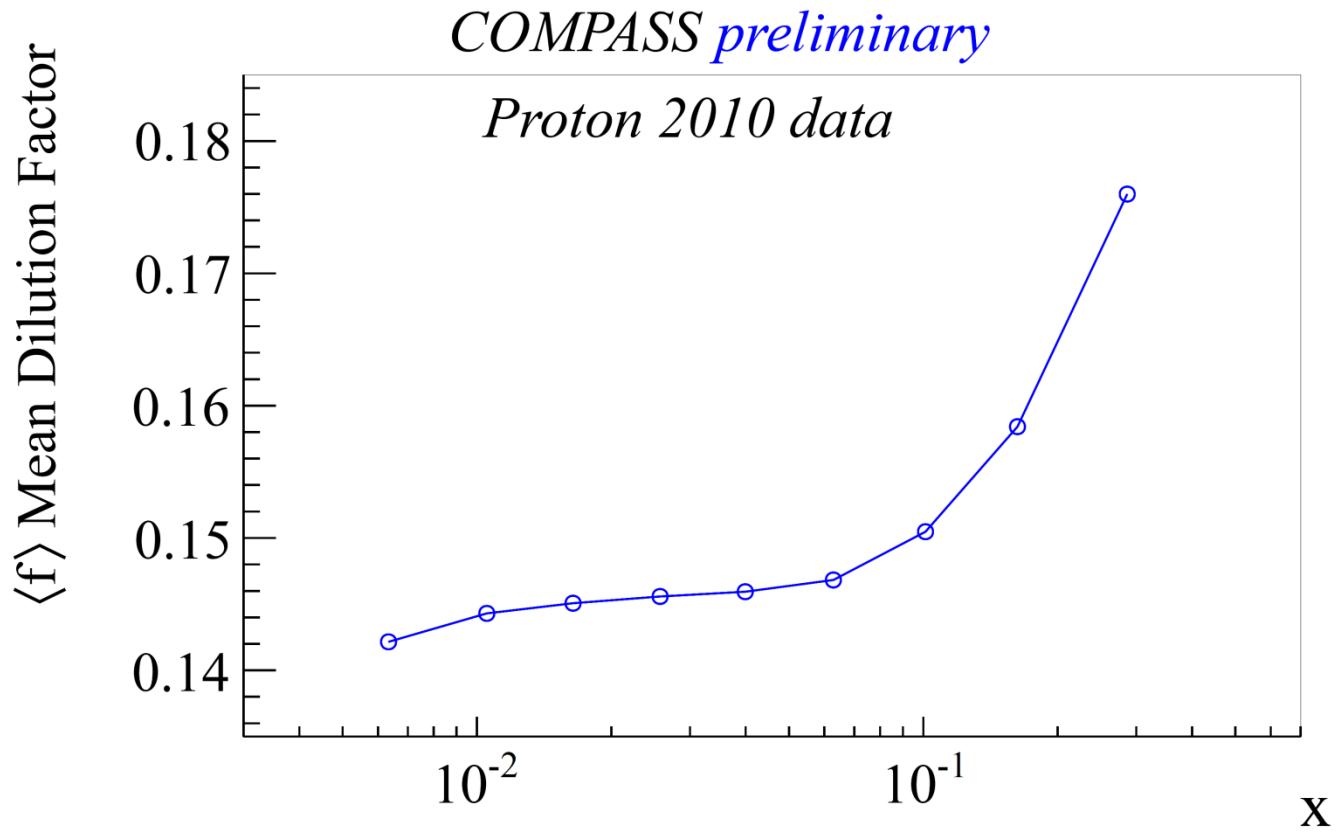
Thank you!

Spare slides





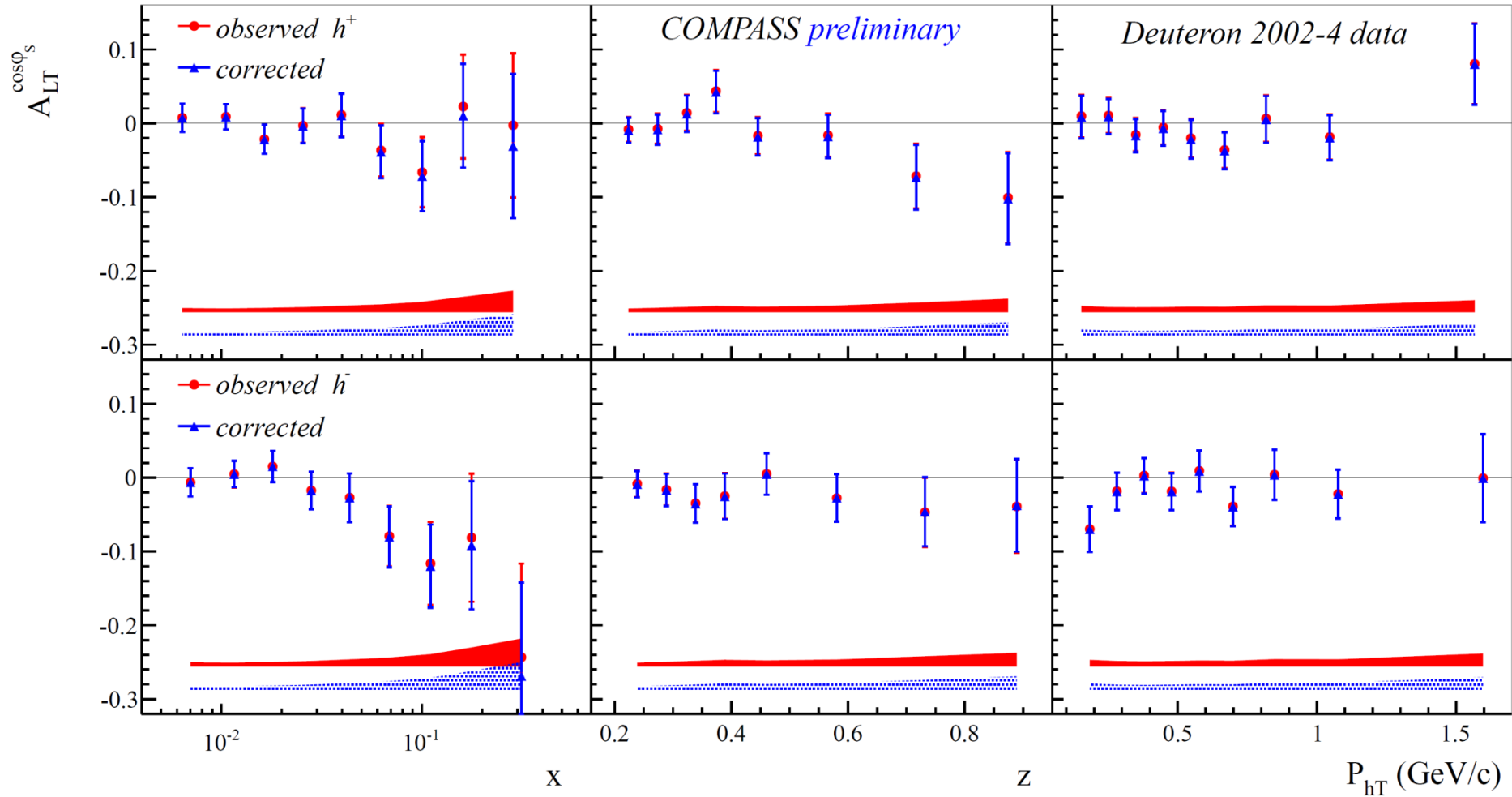
Dilution factor





$A_{LT}^{\cos\varphi_s}$ corrected for A_{LL} contribution: using A_{LL} from PRD 74, 074015

$$A_{LT}^{\cos\varphi_s'} \approx \left(\cos\theta A_{LT}^{\cos\varphi_s} - \sin\theta \frac{\sqrt{(1-\varepsilon^2)}}{\sqrt{2\varepsilon(1-\varepsilon)}} A_{LL} \right)$$





$A_{LT}^{\cos(\phi_h - \phi_S)}$ asymmetry PRD73:114017,(2006)

There exists a relation between first momentum of g_{1T} and g_2 (follows from Lorentz invariance, Tangerman & Mulders) :

$$g_{1T}^{q(1)}(x) \equiv \int_0^x g_2^q(y) dy = - \int_x^1 g_2^q(y) dy = (WW - appr) = x \int_x^1 \frac{g_1^q(y)}{y} dy$$

$$f_1^q(x, k_T^2) = f_1^q(x) \frac{1}{\pi \mu_0^2} \exp\left(-\frac{k_T^2}{\mu_0^2}\right),$$

$$D_q^h(z, P_{hT}^2) = D_q^h(z) \frac{1}{\pi \mu_D^2} \exp\left(-\frac{P_{hT}^2}{\mu_D^2}\right),$$

$$g_{1T}^q(x, k_T^2) = g_{1T}^q(x) N \exp\left(-\frac{k_T^2}{\mu_1^2}\right)$$

N is fixed by

$$g_{1T}^{q(1)}(x) = \int d^2 k_T \frac{k_T^2}{2M^2} g_{1T}^q(x, k_T^2)$$

$$g_{1T}^q(x, k_T^2) = g_{1T}^{q(1)}(x) \frac{2M^2}{\pi \mu_1^4} \exp\left(-\frac{k_T^2}{\mu_1^2}\right)$$

From analysis of unpolarized P_{hT} dependence and Cahn effect

$$\mu_0^2 = 0.25(\text{GeV}/c)^2, \quad \mu_D^2 = 0.2(\text{GeV}/c)^2$$

Naïve positivity constraint: $\frac{|k_T|}{M} |g_{1T}^q(x, k_T^2)| < f_1^q(x, k_T^2)$

holds if $\mu_1^2 \leq 0.246 (\text{GeV}/c)^2$

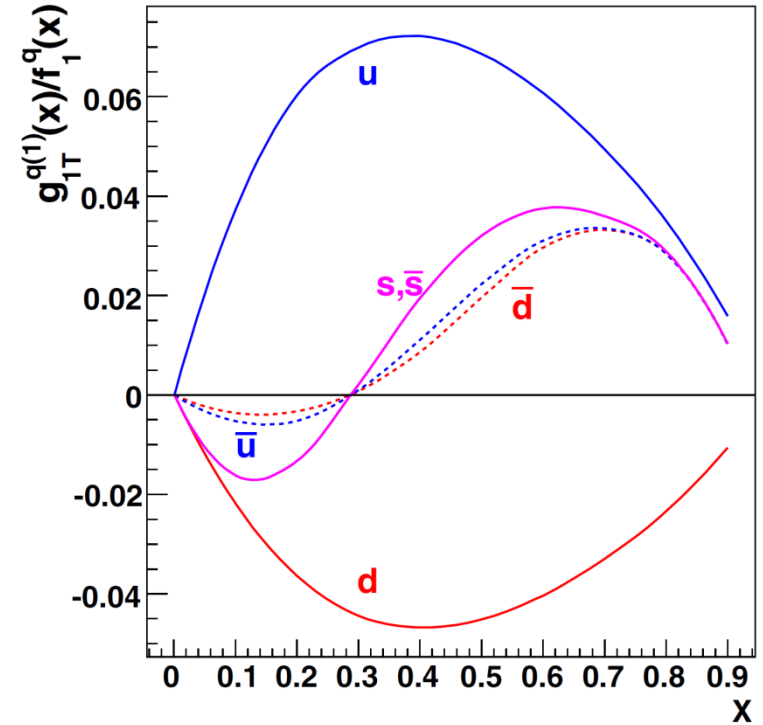
Predictions done for: $\mu_1^2 = 0.1, 0.15 \text{ and } 0.25(\text{GeV}/c)^2$

$$A_{LT}^{\cos \phi_h^S}(x, y, z, P_{hT}) = 2 \frac{\int_0^{2\pi} d\phi_h^S (d\sigma^{\rightarrow\hat{1}} - d\sigma^{\rightarrow\downarrow}) \cos \phi_h^S}{\int_0^{2\pi} d\phi_h^S (d\sigma^{\rightarrow\hat{1}} + d\sigma^{\rightarrow\downarrow})} = 2 \frac{\frac{2-y}{xy} \frac{Mz |P_{hT}|}{(\mu_D^2 + \mu_1^2 z^2)^2} \exp\left(-\frac{P_{hT}^2}{\mu_D^2 + \mu_1^2 z^2}\right) \sum_q e_q^2 g_{1T}^{q(1)}(x) D_q^h(z)}{1 + (1-y)^2 \frac{1}{xy^2} \frac{1}{\mu_D^2 + \mu_0^2 z^2} \exp\left(-\frac{P_{hT}^2}{\mu_D^2 + \mu_0^2 z^2}\right) \sum_q e_q^2 f_1^q(x) D_q^h(z)}$$



$A_{LT}^{\cos(\varphi_h - \varphi_S)}$ asymmetry *PRD73:114017,(2006)*

$$A_{TMD} = \frac{\text{Low } x, y, z \text{ \& } p_T + \text{High } x, y, z \text{ \& } p_T}{\text{Low } x, y, z \text{ \& } p_T + \text{High } x, y, z \text{ \& } p_T}$$



GRV98+GRSV2000 LO, std DFs Kretzer FFs

COMPASS - $Q^2 > 1.0 \text{ (GeV/c)}^2$, $W^2 > 25 \text{ GeV}^2$, $0.05 < x_{Bj} < 0.6$, $0.5 < y < 0.9$, $0.4 < z < 0.9$, $|P_{h,T}| > 0.5 \text{ GeV/c}$

HERMES - $Q^2 > 1.0 \text{ (GeV/c)}^2$, $W^2 > 10 \text{ GeV}^2$, $0.1 < x_{Bj} < 0.6$, $0.45 < y < 0.85$, $0.4 < z < 0.9$, $|P_{h,T}| > 0.5 \text{ GeV/c}$

JLab - $Q^2 > 1.0 \text{ (GeV/c)}^2$, $W^2 > 4 \text{ GeV}^2$, $0.2 < x_{Bj} < 0.6$, $0.4 < y < 0.7$, $0.4 < z < 0.7$, $|P_{h,T}| > 0.5 \text{ GeV/c}$

